



# SERVICE PARTS LIST

**BULLETIN NO.**  
**54-40-1212**

| SPECIFY CATALOG NO. AND SERIAL NO. WHEN ORDERING PARTS |             | REVISED BULLETIN          | DATE      |
|--|-------------|---------------------------|-----------|
| <b>TWO SPEED BANDSAW</b>                               |             | 54-40-1211                | Mar. 2020 |
| <b>CATALOG NO.</b>                                     | <b>6225</b> | <b>WIRING INSTRUCTION</b> |           |
| <b>STARTING SERIAL NO.</b>                             | <b>457C</b> | <b>58-01-2000</b>         |           |



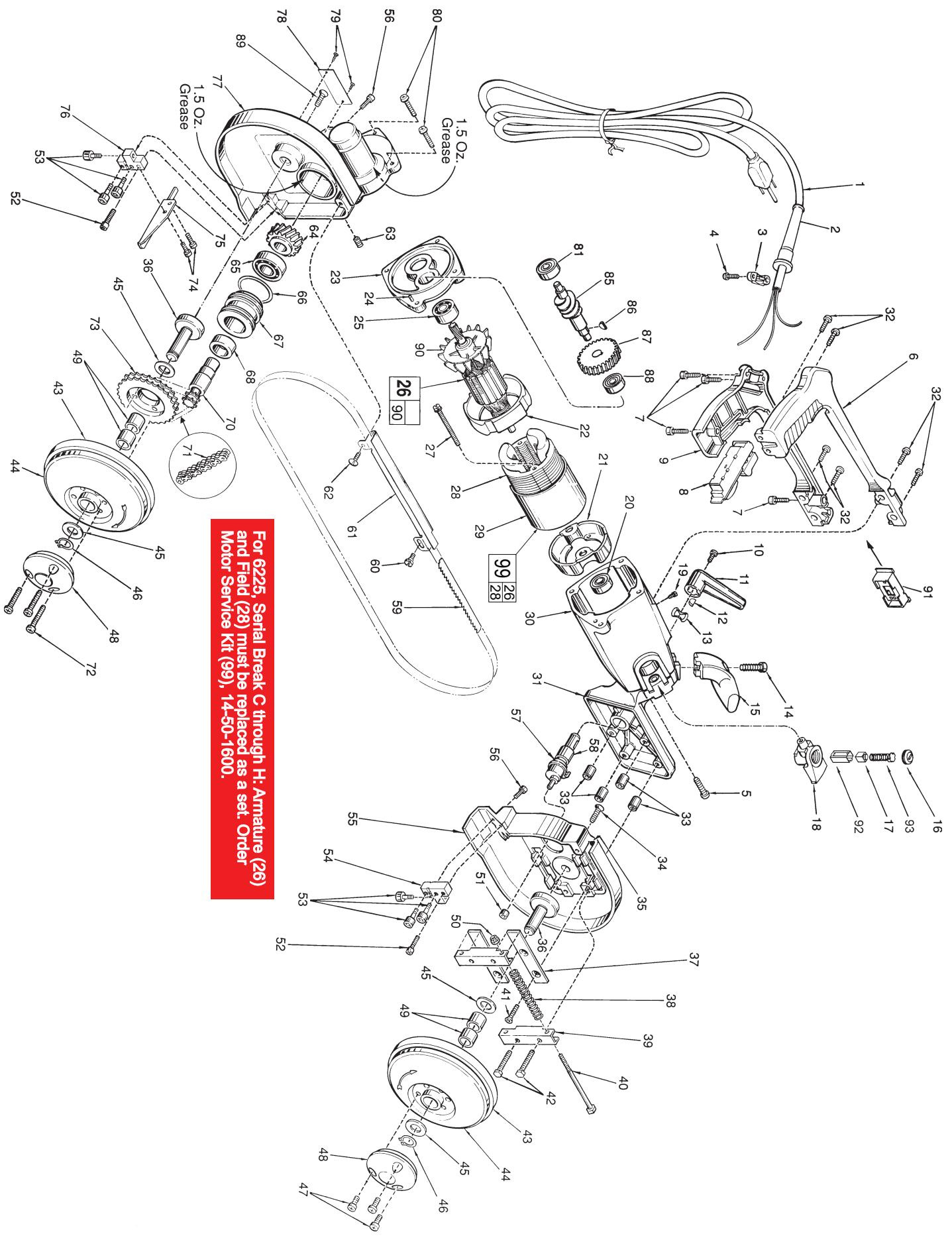
**EXAMPLE:**  
Component Parts (Small #)  
Are Included When Ordering  
The Assembly (Large #).

**For 6225, Serial Break C through H: Armature (26) and Field (28) must be replaced as a set. Order Motor Service Kit (99), 14-50-1600.**

| FIG. | PART NO.   | DESCRIPTION OF PART                     | NO. REQ.   | FIG. | PART NO.   | DESCRIPTION OF PART                  | NO. REQ.   |
|------|------------|---|------------|------|------------|--------------------------------------|------------|
| 1    | 22-64-3200 | Cord Set                                | (1)        | 51   | 42-40-1010 | Bronze Bushing                       | (1)        |
| 2    | 44-76-0210 | Cord Protector                          | (1)        | 52   | 06-82-5574 | 10-24 x 7/8" Pan Hd. Tapt. T-25      | (2)        |
| 3    | 31-17-0155 | Cord Clamp                              | (1)        | 53   | 02-25-0260 | Cam Follower                         | (6)        |
| 4    | 06-82-7270 | 8-16 x 5/8" Slit. Plastite Pan Hd. T-20 | (2)        | 54   | 42-28-0205 | Front Blade Guide Block              | (1)        |
| 5    | 06-82-5292 | 1/4-20 x 7/8" Pan Hd. Tapt. T-30        | (4)        | 55   | 28-41-0510 | Front Pulley Guard                   | (1)        |
| 6    | 31-44-0508 | Right Handle Half                       | (1)        | 56   | 06-82-5330 | 10-32 x 5/8" Pan Hd. Tapt. T-25      | (2)        |
| 7    | 06-82-7270 | 8-16 x 5/8" Plastite Pan Hd. Slit. T-20 | (4)        | 57   | 14-73-0160 | Blade Release Shaft Assy.            | (1)        |
| 8    | 23-66-1040 | Switch                                  | (1)        | 58   | 02-50-3235 | Needle Bearing                       | (1)        |
| 9    | 31-44-0518 | Left Handle Half                        | (1)        | 59   | -----      | Bandsaw Blade - Select From Catalog  | (1)        |
| 10   | 06-82-7252 | 8-32 x 3/8" Pan Hd. Slit. Tapt. T-20    | (1)        | 60   | 06-82-9264 | 10-24 x 1/2" Pan Hd. Tapt. T-25      | (1)        |
| 11   | 28-62-0031 | Blade Release Lever                     | (1)        | 61   | 43-54-0250 | Blade Guard                          | (1)        |
| 12   | 06-42-2200 | Woodruff Key                            | (1)        | 62   | 06-82-8864 | 10-24 x 1/2" Pan Hd. Sem T-25        | (1)        |
| 13   | 45-88-7105 | Wave Washer                             | (1)        | 63   | 06-83-2686 | 1/4-20 x 3/4" Set Screw              | (1)        |
| 14   | 06-75-4675 | 3/8-16 x 1" Socket Hd. Screw            | (1)        | 64   | 32-90-0103 | Worm Gear                            | (1)        |
| 15   | 31-44-0330 | Front Handle                            | (1)        | 65   | 02-04-2000 | Ball Bearing                         | (1)        |
| 16   | 23-44-0220 | Brush Retaining Screw                   | (2)        | 66   | 34-40-3115 | O-Ring                               | (1)        |
| 17   | 22-16-0275 | Carbon Brush                            | (2)        | 67   | 43-76-0360 | Worm Gear Shaft Housing              | (1)        |
| 18   | 22-20-0020 | Brush Tube Housing                      | (2)        | 68   | 02-50-6400 | Needle Bearing                       | (1)        |
| 19   | 06-82-8828 | 8-32 x 5/16" Pan Hd. Tapt. T-20         | (1)        | 70   | 36-66-0510 | Worm Gear Shaft                      | (1)        |
| 20   | 02-04-0851 | Ball Bearing                            | (1)        | 71   | 42-60-0100 | Roller Chain                         | (1)        |
| 21   | 31-55-0020 | Coil Shield                             | (1)        | 72   | 06-82-3060 | 1/4-20 x 1-5/16" Fil Hd. Tapt T-30   | (3)        |
| 22   | 31-05-0170 | Fan Baffle                              | (1)        | 73   | 31-88-0010 | Sprocket                             | (1)        |
| 23   | 28-28-1485 | Diaphragm                               | (1)        | 74   | 06-82-8864 | 10-24 x 1/2" Pan Hd. Sem T-25        | (2)        |
| 24   | 06-65-1155 | 3/16 x 5/8" Groove Pin                  | (1)        | 75   | 42-38-0031 | Bumper                               | (1)        |
| 25   | 02-04-1050 | Ball Bearing                            | (1)        | 76   | 42-28-0210 | Rear Blade Guide Block               | (1)        |
| 26   | -----      | <b>120 Volt Armature</b>                | <b>(1)</b> | 77   | 28-14-2120 | Gear Case                            | (1)        |
| 27   | 06-82-7425 | 8-16 x 2" Slit. Pan Hd. Plast. T-20     | (2)        | 78   | 12-99-0250 | Nameplate Blank                      | (1)        |
| ★ 28 | -----      | <b>120 Volt Field</b>                   | <b>(1)</b> | 79   | 06-82-5270 | Nameplate Screw                      | (2)        |
| 29   | 23-16-0020 | Field Insulator                         | (1)        | 80   | 06-82-3060 | 1/4-20 x 1-5/16" Fil. Hd. Tapt. T-30 | (4)        |
| 30   | 28-50-6000 | Motor Housing                           | (1)        | 81   | 02-04-1030 | Ball Bearing                         | (1)        |
| 31   | 28-90-0190 | Pulley Support                          | (1)        | 85   | 36-18-0041 | Worm Drive Shaft                     | (1)        |
| 32   | 06-82-5294 | 1/4-20 x 3/4" Pan Hd. Taptite T-30      | (6)        | 86   | 06-42-1200 | Woodruff Key                         | (1)        |
| 33   | 45-36-0720 | Retaining Plate Spacer                  | (4)        | 87   | 32-40-1680 | Intermediate Gear                    | (1)        |
| 34   | 06-82-5394 | 5/16-18 x 13/16" Pan Hd. T-40           | (1)        | 88   | 02-04-1020 | Ball Bearing                         | (1)        |
| 35   | 44-52-0120 | Blade Backing Pad                       | (1)        | 89   | 06-82-5394 | 5/16-18 x 13/16" Pan Hd. T-40        | (1)        |
| 36   | 42-12-0070 | Blade Pulley Axle                       | (2)        | 90   | 22-84-0770 | Fan                                  | (1)        |
| 37   | 44-66-0550 | Pulley Guard Retaining Plate            | (2)        | 91   | 23-16-1340 | Insulator                            | (1)        |
| 38   | 40-50-0710 | Blade Tension Spring                    | (2)        | 92   | 22-20-0780 | Brush Tube                           | (2)        |
| 39   | 42-18-0190 | Blade Tension Bar                       | (2)        | 93   | 23-52-0255 | Brush Spring Assembly                | (2)        |
| 40   | 06-75-1991 | 1/4-20 x 4" Hex. Hd. Screw              | (2)        | 99   | 14-50-1600 | <b>Motor Service Kit</b>             | <b>(1)</b> |
| 41   | 06-82-3810 | 1/4-20 x 1-1/4" Flat Hd. Taptite T-27   | (4)        |      |            |                                      |            |
| 42   | 06-82-5298 | 1/4-20 x 1" Pan Hd. Tapt. T-30          | (2)        |      |            |                                      |            |
| 43   | 45-69-0010 | Blade Pulley Tire                       | (2)        |      |            |                                      |            |
| 44   | 28-95-0120 | Blade Pulley                            | (2)        |      |            |                                      |            |
| 45   | 45-88-7165 | Pulley Hub Washer                       | (4)        |      |            |                                      |            |
| 46   | 34-60-1400 | Snap Ring                               | (2)        |      |            |                                      |            |
| 47   | 06-82-3024 | 1/4-20 x 1/2" Fil Hd. Taptite T-30      | (3)        |      |            |                                      |            |
| 48   | 25-20-1220 | Blade Pulley Cover                      | (2)        |      |            |                                      |            |
| 49   | 42-40-0580 | Sleeve Bearing                          | (4)        |      |            |                                      |            |
| 50   | 06-57-5000 | 1/4-20 Lock Nut                         | (2)        |      |            |                                      |            |

**FIG. NOTES**  
39 Dimension Between Outside Edges of Blade Tension Bars 3-11/16" ± 1/16".  
53 Torque to 20-30 In./Lbs.  
10,52, 56,74 Apply Type 242 Blue Loctite.  
34,89 Apply Type 242 Blue Loctite-Torque to 75-115 In./Lbs.

**FIG. LUBRICATION**  
77 3 Oz. Type "G" Grease, No. 49-08-4140.  
1.5 Oz. in each of two locations (See Illustration).



**For 6225, Serial Break C through H: Armature (26) and Field (28) must be replaced as a set. Order Motor Service Kit (99), 14-50-1600.**