



SERVICE PARTS LIST

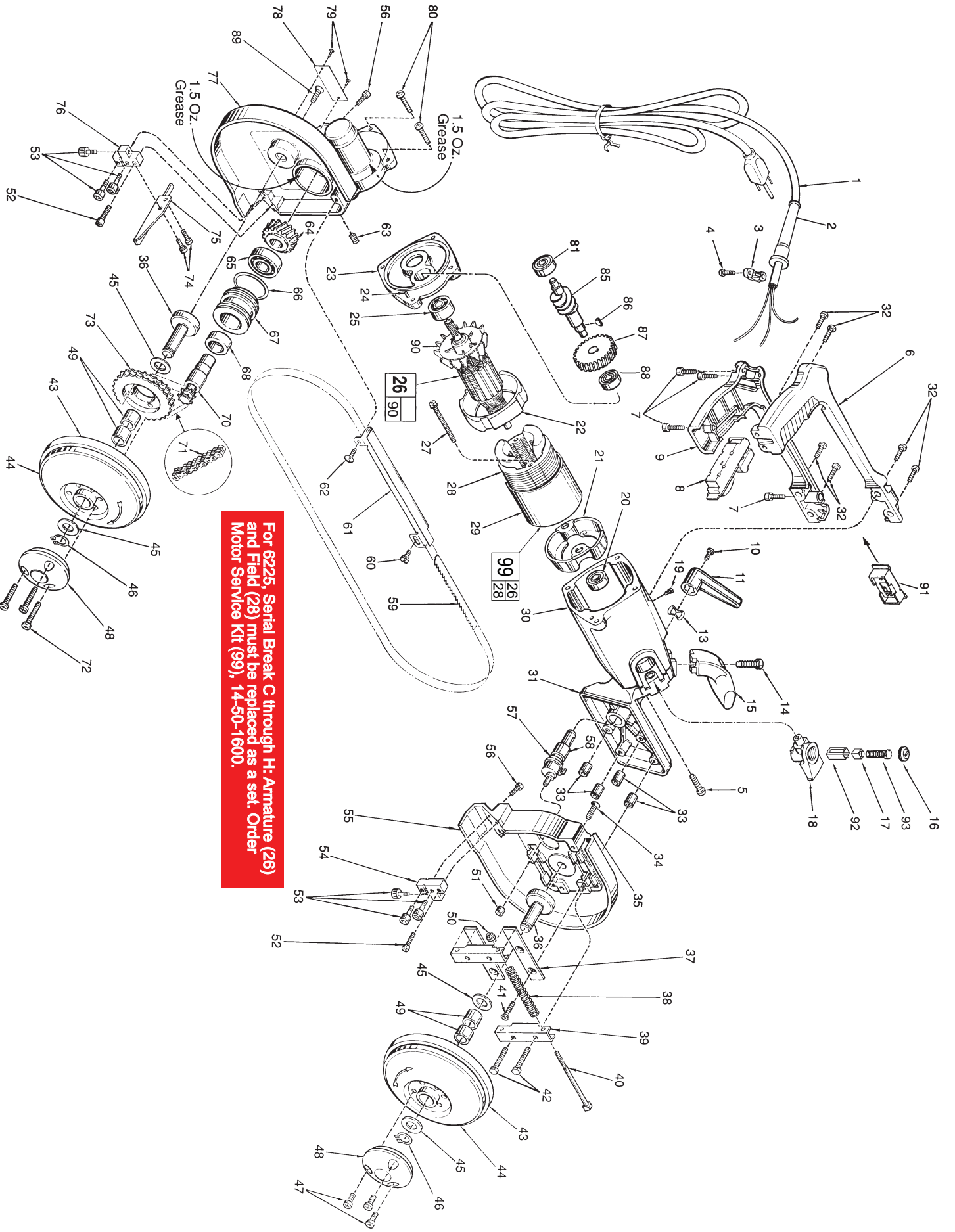
BULLETIN NO.
54-40-1213

SPECIFY CATALOG NO. AND SERIAL NO. WHEN ORDERING PARTS		REVISED BULLETIN	DATE
TWO SPEED BANDSAW		54-40-1212	Mar. 2020
CATALOG NO.	6225	WIRING INSTRUCTION	
STARTING SERIAL NO.	457D	58-01-2000	

EXAMPLE:
 Component Parts (Small #)
 Are Included When Ordering
 The Assembly (Large #).

For 6225, Serial Break C through H: Armature (26) and Field (28) must be replaced as a set. Order Motor Service Kit (99), 14-50-1600.

FIG.	PART NO.	DESCRIPTION OF PART	NO. REQ.	FIG.	PART NO.	DESCRIPTION OF PART	NO. REQ.
1	22-64-3200	Cord Set	(1)	51	42-40-1010	Bronze Bushing	(1)
2	44-76-0210	Cord Protector	(1)	52	06-82-5574	10-24 x 7/8" Pan Hd. Tapt. T-25	(2)
3	31-17-0155	Cord Clamp	(1)	53	02-25-0260	Cam Follower	(6)
4	06-82-7270	8-16 x 5/8" Slit. Plastite Pan Hd. T-20	(2)	54	42-28-0205	Front Blade Guide Block	(1)
5	06-82-5292	1/4-20 x 7/8" Pan Hd. Tapt. T-30	(4)	55	28-41-0510	Front Pulley Guard	(1)
6	31-44-0508	Right Handle Half	(1)	56	06-82-5330	10-32 x 5/8" Pan Hd. Tapt. T-25	(2)
7	06-82-7270	8-16 x 5/8" Plastite Pan Hd. Slit. T-20	(4)	★ 57	45-08-0172	Blade Release Shaft	(1)
8	23-66-1040	Switch	(1)	58	02-50-3235	Needle Bearing	(1)
9	31-44-0518	Left Handle Half	(1)	59	-----	Bandsaw Blade - Select From Catalog	(1)
10	06-82-7252	8-32 x 3/8" Pan Hd. Slit. Tapt. T-20	(1)	★ 60	06-82-9270	10-24 x 1/2" Pan Hd. Tapt. Shld. T-25	(1)
★ 11	28-62-0032	Blade Release Lever	(1)	61	43-54-0250	Blade Guard	(1)
13	45-88-7105	Wave Washer	(1)	62	06-82-8864	10-24 x 1/2" Pan Hd. Sem T-25	(1)
14	06-75-4675	3/8-16 x 1" Socket Hd. Screw	(1)	63	06-83-2686	1/4-20 x 3/4" Set Screw	(1)
15	31-44-0330	Front Handle	(1)	64	32-90-0103	Worm Gear	(1)
16	23-44-0220	Brush Retaining Screw	(2)	65	02-04-2000	Ball Bearing	(1)
17	22-16-0275	Carbon Brush	(2)	66	34-40-3115	O-Ring	(1)
18	22-20-0020	Brush Tube Housing	(2)	67	43-76-0360	Worm Gear Shaft Housing	(1)
19	06-82-8828	8-32 x 5/16" Pan Hd. Tapt. T-20	(1)	68	02-50-6400	Needle Bearing	(1)
20	02-04-0851	Ball Bearing	(1)	70	36-66-0510	Worm Gear Shaft	(1)
21	31-55-0020	Coil Shield	(1)	71	42-60-0100	Roller Chain	(1)
22	31-05-0170	Fan Baffle	(1)	72	06-82-3060	1/4-20 x 1-5/16" Fil Hd. Tapt T-30	(3)
23	28-28-1485	Diaphragm	(1)	73	31-88-0010	Sprocket	(1)
24	06-65-1155	3/16 x 5/8" Groove Pin	(1)	74	06-82-8864	10-24 x 1/2" Pan Hd. Sem T-25	(2)
25	02-04-1050	Ball Bearing	(1)	★ 75	42-38-0030	Bumper	(1)
26	-----	120 Volt Armature	(1)	76	42-28-0210	Rear Blade Guide Block	(1)
27	06-82-7425	8-16 x 2" Slit. Pan Hd. Plast. T-20	(2)	77	28-14-2120	Gear Case	(1)
28	-----	120 Volt Field	(1)	78	12-99-0250	Nameplate Blank	(1)
29	23-16-0020	Field Insulator	(1)	79	06-82-5270	Nameplate Screw	(2)
30	28-50-6000	Motor Housing	(1)	80	06-82-3060	1/4-20 x 1-5/16" Fil. Hd. Tapt. T-30	(4)
31	28-90-0190	Pulley Support	(1)	81	02-04-1030	Ball Bearing	(1)
32	06-82-5294	1/4-20 x 3/4" Pan Hd. Taptite T-30	(6)	85	36-18-0041	Worm Drive Shaft	(1)
33	45-36-0720	Retaining Plate Spacer	(4)	86	06-42-1200	Woodruff Key	(1)
34	06-82-5394	5/16-18 x 13/16" Pan Hd. T-40	(1)	87	32-40-1680	Intermediate Gear	(1)
35	44-52-0120	Blade Backing Pad	(1)	88	02-04-1020	Ball Bearing	(1)
36	42-12-0070	Blade Pulley Axle	(2)	89	06-82-5394	5/16-18 x 13/16" Pan Hd. T-40	(1)
37	44-66-0550	Pulley Guard Retaining Plate	(2)	90	22-84-0531	Fan	(1)
38	40-50-0710	Blade Tension Spring	(2)	91	23-16-1340	Insulator	(1)
39	42-18-0190	Blade Tension Bar	(2)	92	22-20-0780	Brush Tube	(2)
40	06-75-1991	1/4-20 x 4" Hex. Hd. Screw	(2)	93	23-52-0255	Brush Spring Assembly	(2)
41	06-82-3810	1/4-20 x 1-1/4" Flat Hd. Taptite T-27	(4)	99	14-50-1600	Motor Service Kit	(1)
42	06-82-5298	1/4-20 x 1" Pan Hd. Tapt. T-30	(2)				
43	45-69-0010	Blade Pulley Tire	(2)	FIG. NOTES			
44	28-95-0120	Blade Pulley	(2)	39	Dimension Between Outside Edges of		
45	45-88-7165	Pulley Hub Washer	(4)		Blade Tension Bars 3-11/16" ± 1/16".		
46	34-60-1400	Snap Ring	(2)	53	Torque to 20-30 In./Lbs.		
47	06-82-3024	1/4-20 x 1/2" Fil Hd. Taptite T-30	(3)	10,52,	Apply Type 242 Blue Loctite.		
48	25-20-1220	Blade Pulley Cover	(2)	56,74			
49	42-40-0580	Sleeve Bearing	(4)	34,89	Apply Type 242 Blue Loctite-Torque to 75-115 In./Lbs.		
50	06-57-5000	1/4-20 Lock Nut	(2)	FIG. LUBRICATION			
				77	3 Oz. Type "G" Grease, No. 49-08-4140.		
					1.5 Oz. in each of two locations (See Illustration).		



For 6225, Serial Break C through H: Armature (26) and Field (28) must be replaced as a set. Order Motor Service Kit (99), 14-50-1600.