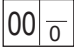




SERVICE PARTS LIST

BULLETIN NO.
54-40-1214

SPECIFY CATALOG NO. AND SERIAL NO. WHEN ORDERING PARTS				REVISED BULLETIN	DATE
TWO SPEED BANDSAW				54-40-1213	Mar. 2020
CATALOG NO.	6225	STARTING SERIAL NO.	457E	WIRING INSTRUCTION 58-01-2000	

EXAMPLE:

 Component Parts (Small #)
 Are Included When Ordering
 The Assembly (Large #).

For 6225, Serial Break C through H: Armature (26) and Field (28) must be replaced as a set. Order Motor Service Kit (99), 14-50-1600.

FIG.	PART NO.	DESCRIPTION OF PART	NO. REQ.
1	22-64-3200	Cord Set	(1)
2	44-76-0210	Cord Protector	(1)
3	31-17-0155	Cord Clamp	(1)
4	06-82-7270	8-16 x 5/8" Slit. Plastite Pan Hd. T-20	(2)
5	06-82-5292	1/4-20 x 7/8" Pan Hd. Tapt. T-30	(4)
6	31-44-0508	Right Handle Half	(1)
7	06-82-7270	8-16 x 5/8" Plastite Pan Hd. Slit. T-20	(4)
8	23-66-1040	Switch	(1)
9	31-44-0518	Left Handle Half	(1)
10	06-82-7252	8-32 x 3/8" Pan Hd. Slit. Tapt. T-20	(1)
11	28-62-0032	Blade Release Lever	(1)
★ 12	43-44-1125	Gasket	(1)
13	45-88-7105	Wave Washer	(1)
14	06-75-4675	3/8-16 x 1" Socket Hd. Screw	(1)
15	31-44-0330	Front Handle	(1)
16	23-44-0220	Brush Retaining Screw	(2)
17	22-16-0275	Carbon Brush	(2)
18	22-20-0020	Brush Tube Housing	(2)
19	06-82-8828	8-32 x 5/16" Pan Hd. Tapt. T-20	(1)
20	02-04-0851	Ball Bearing	(1)
21	31-55-0020	Coil Shield	(1)
22	31-05-0170	Fan Baffle	(1)
★ 23	28-28-1486	Diaphragm	(1)
24	06-65-1155	3/16 x 5/8" Groove Pin	(1)
25	02-04-1050	Ball Bearing	(1)
26	-----	120 Volt Armature	(1)
27	06-82-7425	8-16 x 2" Slit. Pan Hd. Plast. T-20	(2)
28	-----	120 Volt Field	(1)
29	23-16-0020	Field Insulator	(1)
30	28-50-6000	Motor Housing	(1)
31	28-90-0190	Pulley Support	(1)
32	06-82-5294	1/4-20 x 3/4" Pan Hd. Taptite T-30	(6)
33	45-36-0720	Retaining Plate Spacer	(4)
34	06-82-5394	5/16-18 x 13/16" Pan Hd. T-40	(1)
35	44-52-0120	Blade Backing Pad	(1)
36	42-12-0070	Blade Pulley Axle	(2)
37	44-66-0550	Pulley Guard Retaining Plate	(2)
38	40-50-0710	Blade Tension Spring	(2)
39	42-18-0190	Blade Tension Bar	(2)
40	06-75-1991	1/4-20 x 4" Hex. Hd. Screw	(2)
41	06-82-3810	1/4-20 x 1-1/4" Flat Hd. Taptite T-27	(4)
42	06-82-5298	1/4-20 x 1" Pan Hd. Tapt. T-30	(2)
43	45-69-0010	Blade Pulley Tire	(2)
44	28-95-0120	Blade Pulley	(2)
45	45-88-7165	Pulley Hub Washer	(4)
46	34-60-1400	Snap Ring	(2)
47	06-82-3024	1/4-20 x 1/2" Fil Hd. Taptite T-30	(3)
48	25-20-1220	Blade Pulley Cover	(2)
49	42-40-0580	Sleeve Bearing	(4)
50	06-57-5000	1/4-20 Lock Nut	(2)

FIG.	PART NO.	DESCRIPTION OF PART	NO. REQ.
51	42-40-1010	Bronze Bushing	(1)
52	06-82-5574	10-24 x 7/8" Pan Hd. Tapt. T-25	(2)
53	02-25-0260	Cam Follower	(6)
54	42-28-0205	Front Blade Guide Block	(1)
55	28-41-0510	Front Pulley Guard	(1)
56	06-82-5330	10-32 x 5/8" Pan Hd. Tapt. T-25	(2)
57	45-08-0172	Blade Release Shaft	(1)
58	02-50-3235	Needle Bearing	(1)
59	-----	Bandsaw Blade - Select From Catalog	(1)
60	06-82-9270	10-24 x 1/2" Pan Hd. Tapt. Shld. T-25	(1)
★ 61	43-54-0245	Blade Guard	(1)
62	06-82-8864	10-24 x 1/2" Pan Hd. Sem T-25	(1)
63	06-83-2686	1/4-20 x 3/4" Set Screw	(1)
64	32-90-0103	Worm Gear	(1)
65	02-04-2000	Ball Bearing	(1)
66	34-40-3115	O-Ring	(1)
67	43-76-0360	Worm Gear Shaft Housing	(1)
68	02-50-6400	Needle Bearing	(1)
70	36-66-0510	Worm Gear Shaft	(1)
71	42-60-0100	Roller Chain	(1)
72	06-82-3060	1/4-20 x 1-5/16" Fil Hd. Tapt T-30	(3)
73	31-88-0010	Sprocket	(1)
74	06-82-8864	10-24 x 1/2" Pan Hd. Sem T-25	(2)
75	42-38-0030	Bumper	(1)
76	42-28-0210	Rear Blade Guide Block	(1)
77	28-14-2120	Gear Case	(1)
78	12-99-0250	Nameplate Blank	(1)
79	06-82-5270	Nameplate Screw	(2)
80	06-82-3060	1/4-20 x 1-5/16" Fil. Hd. Tapt. T-30	(4)
81	02-04-1030	Ball Bearing	(1)
85	36-18-0041	Worm Drive Shaft	(1)
86	06-42-1200	Woodruff Key	(1)
87	32-40-1680	Intermediate Gear	(1)
88	02-04-1020	Ball Bearing	(1)
89	06-82-5394	5/16-18 x 13/16" Pan Hd. T-40	(1)
90	22-84-0531	Fan	(1)
91	23-16-1340	Insulator	(1)
92	22-20-0780	Brush Tube	(2)
93	23-52-0255	Brush Spring Assembly	(2)
99	14-50-1600	Motor Service Motor Kit	(1)

FIG. NOTES

39 Dimension Between Outside Edges of Blade Tension Bars 3-11/16" ± 1/16".

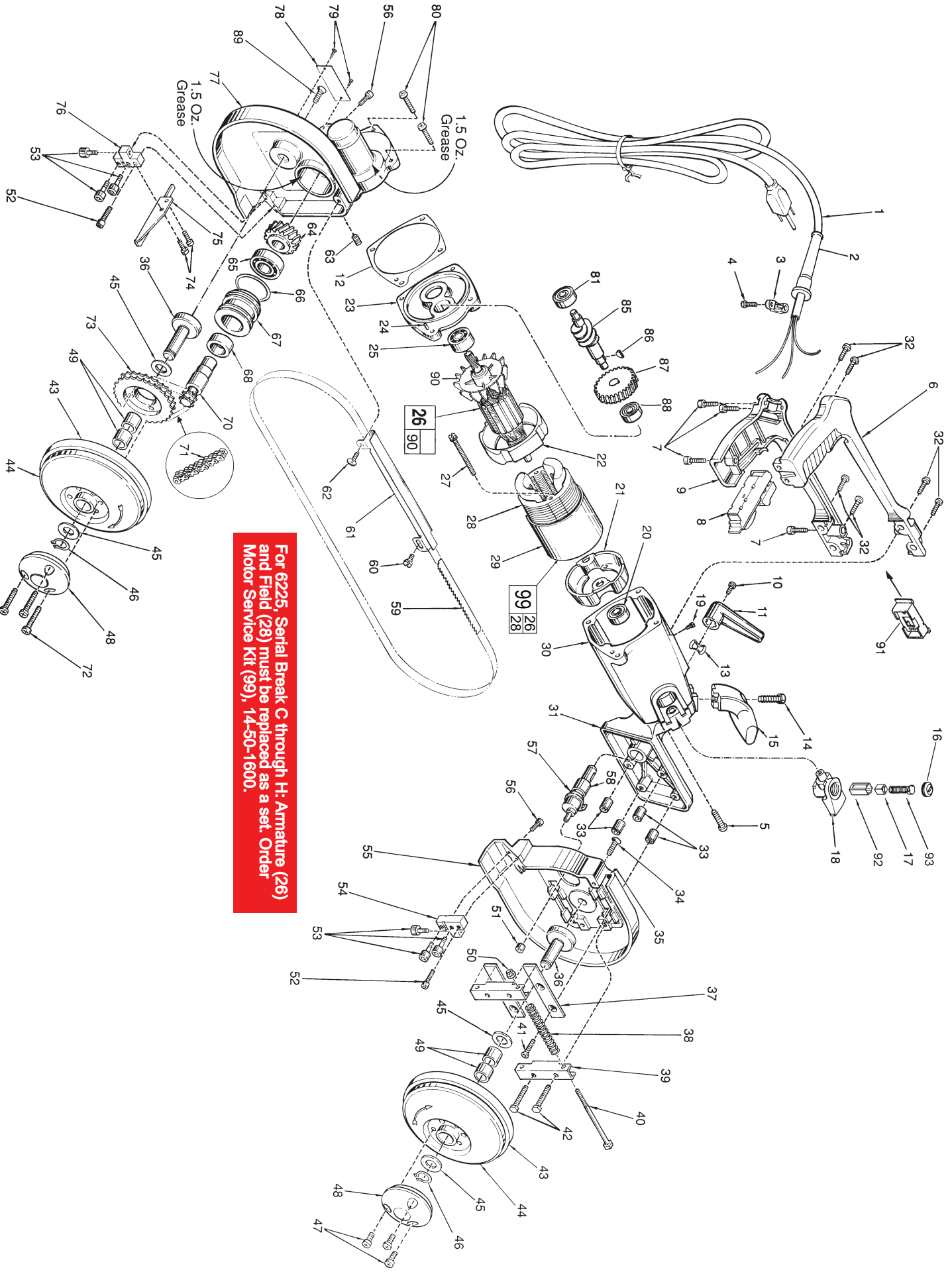
53 Torque to 20-30 In./Lbs.

35 Apply Loctite Speed Bonder 326.

34,89 Torque to 95-135 In./Lbs.

FIG. LUBRICATION

77 3 Oz. Type "G" Grease, No. 49-08-4140.
1.5 Oz. in each of two locations (See Illustration).



For 6225, Serial Break C through H, Armature (26) and Field (28) must be replaced as a set. Order Motor Service Kit (99), 14-50-1600.