



# SERVICE PARTS LIST

**BULLETIN NO.**  
**54-40-1216**

SPECIFY CATALOG NO. AND SERIAL NO. WHEN ORDERING PARTS		REVISED BULLETIN	DATE
<b>TWO SPEED BANDSAW</b>		54-40-1215	Mar. 2020
<b>CATALOG NO.</b>	<b>6225</b>	WIRING INSTRUCTION <b>58-01-2001</b>	
<b>STARTING SERIAL NO.</b>	<b>457G</b>		

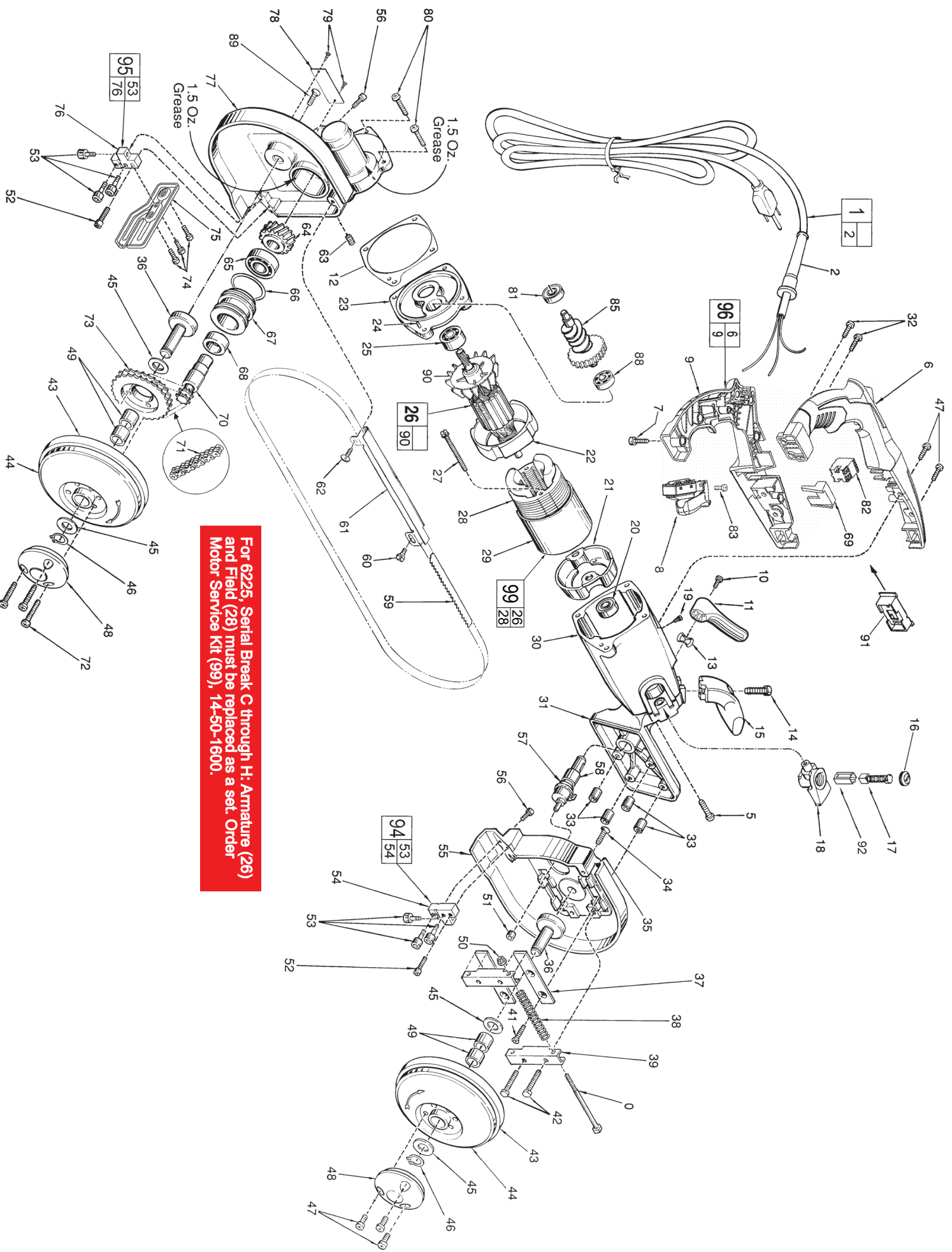
**EXAMPLE:**



Component Parts (Small #)  
Are Included When Ordering  
The Assembly (Large #).

**For 6225, Serial Break C through H: Armature (26) and Field (28) must be replaced as a set. Order Motor Service Kit (99), 14-50-1600.**

FIG.	PART NO.	DESCRIPTION OF PART	NO. REQ.	FIG.	PART NO.	DESCRIPTION OF PART	NO. REQ.
★ 1	22-64-3415	Cord Set	(1)	60	06-82-9270	10-24 x 1/2" Pan Hd. Tapt. Shld. T-25	(1)
2	44-76-0210	Cord Protector	(1)	61	43-54-0245	Blade Guard	(1)
5	06-82-5292	1/4-20 x 7/8" Pan Hd. Tapt. T-30	(4)	62	06-82-8864	10-24 x 1/2" Pan Hd. Sem T-25	(1)
★ 6	-----	Right Handle Half	(1)	63	06-83-2686	1/4-20 x 3/4" Set Screw	(1)
★ 7	06-82-7270	8-16 x 5/8" Plastite Pan Hd. Slit. T-20	(6)	64	32-90-0103	Worm Gear	(1)
★ 8	23-66-2726	Switch	(1)	65	02-04-2000	Ball Bearing	(1)
★ 9	-----	Left Handle Half	(1)	66	34-40-3115	O-Ring	(1)
10	06-82-7252	8-32 x 3/8" Pan Hd. Slit. Tapt. T-20	(1)	67	43-76-0360	Worm Gear Shaft Housing	(1)
11	31-52-0032	Blade Release Lever	(1)	68	02-50-6400	Needle Bearing	(1)
12	43-44-1125	Gasket	(1)	★ 69	43-86-6230	Rubber Insulator	(1)
13	45-88-7105	Wave Washer	(1)	70	36-66-0510	Worm Gear Shaft	(1)
14	06-75-4675	3/8-16 x 1" Socket Hd. Screw	(1)	71	42-60-0100	Roller Chain	(1)
15	31-44-0330	Front Handle	(1)	72	06-82-2365	1/4-20 x 1-5/16" Pan Hd. T-30 Screw	(3)
16	23-44-0220	Brush Retaining Screw	(2)	73	31-88-0010	Sprocket	(1)
17	22-18-0185	Carbon Brush Assembly	(2)	74	06-82-8864	10-24 x 1/2" Pan Hd. Sem T-25	(3)
18	22-20-0020	Brush Tube Housing	(2)	75	42-38-0032	Bumper	(1)
19	06-82-8828	8-32 x 5/16" Pan Hd. Tapt. T-20	(1)	76	42-28-0210	Rear Blade Guide Block	(1)
20	02-04-0854	Ball Bearing	(1)	77	28-14-2120	Gearcase	(1)
21	31-55-0020	Coil Shield	(1)	78	12-99-0250	Nameplate Blank	(1)
22	31-05-0170	Fan Baffle	(1)	79	06-95-0500	Nameplate Screw	(2)
23	28-28-1486	Diaphragm	(1)	80	06-82-3060	1/4-20 x 1-5/16" Fil. Hd. Tapt. T-30	(4)
24	06-65-1155	3/16 x 5/8" Groove Pin	(1)	81	02-04-1030	Ball Bearing	(1)
25	02-04-1050	Ball Bearing	(1)	★ 82	23-66-0375	Slide Switch	(1)
26	-----	<b>120 Volt Armature</b>	<b>(1)</b>	★ 83	06-82-7251	8-16 x 3/8" Pan Hd. Plast. T-20	(1)
27	06-82-7425	8-16 x 2" Slit. Pan Hd. Plast. T-20	(2)	85	14-46-0042	Intermediate Gear / Worm Shaft Kit	(1)
28	-----	<b>120 Volt Field</b>	<b>(1)</b>	88	02-04-1020	Ball Bearing	(1)
29	23-16-0020	Field Insulator	(1)	89	06-82-5394	5/16-18 x 13/16" Pan Hd. T-40	(1)
30	28-50-6000	Motor Housing	(1)	90	22-84-0531	Fan	(1)
31	28-90-0190	Pulley Support	(1)	91	23-16-1340	Insulator	(1)
★ 32	06-82-5294	1/4-20 x 3/4" Pan Hd. Taptite T-30	(2)	92	22-20-0780	Brush Tube	(2)
33	45-36-0720	Retaining Plate Spacer	(4)	94	42-28-0206	Front Blade Guide Assembly	(1)
34	06-82-5394	5/16-18 x 13/16" Pan Hd. T-40	(1)	95	42-28-0211	Rear Blade Guide Assembly	(1)
35	44-52-0120	Blade Backing Pad	(1)	★ 96	14-34-0615	Handle Kit	(1)
36	42-12-0070	Blade Pulley Axle	(2)	★	05-78-0305	Switch Screw (Not Shown)	(4)
37	44-66-0550	Pulley Guard Retaining Plate	(2)	★	23-38-2791	Diode Assembly (See Bulletin 58-01-2001)	(1)
38	40-50-0710	Blade Tension Spring	(2)	★	23-94-6224	Leadwire Assy. - Yellow (See 58-01-2001)	(1)
39	42-18-0190	Blade Tension Bar	(2)	★	23-94-6229	Leadwire Assy. - Red (See 58-01-2001)	(1)
40	06-75-1991	1/4-20 x 4" Hex. Hd. Screw	(2)	★	23-94-0020	Leadwire Assy. - White (See 58-01-2001)	(2)
41	06-82-3810	1/4-20 x 1-1/4" Flat Hd. Taptite T-27	(4)	★	23-94-6226	Leadwire Assy. - Black (See 58-01-2001)	(1)
42	06-82-5298	1/4-20 x 1" Pan Hd. Tapt. T-30	(2)	★	23-94-6227	Leadwire Assy. - Black (See 58-01-2001)	(1)
43	45-69-0010	Blade Pulley Tire	(2)	★	23-94-6228	Leadwire Assy. - White (See 58-01-2001)	(1)
44	28-95-0120	Blade Pulley	(2)	99	14-50-1600	<b>Motor Service Kit</b>	<b>(1)</b>
45	45-88-7165	Pulley Hub Washer	(4)				
46	34-60-1400	Snap Ring	(2)				
★ 47	06-82-5338	1/4-20 x 1/2" Pan Hd. Taptite T-30 Screw	(7)	<b>FIG. NOTES</b>			
48	31-15-1220	Blade Pulley Cover	(2)	39	Dimension Between Outside Edges of Blade Tension Bars 3-11/16" ± 1/16".		
49	42-40-0580	Sleeve Bearing	(4)	53	Torque to 40-55 In./Lbs.		
50	06-57-5000	1/4-20 Lock Nut	(2)	35	Apply Loctite Speed Bonder 326.		
51	42-40-1010	Bronze Bushing	(1)	34,89	Torque to 95-135 In./Lbs.		
52	06-82-5574	10-24 x 7/8" Pan Hd. Tapt. T-25	(2)	<b>FIG. LUBRICATION</b>			
53	02-25-0260	Cam Follower	(6)	77	3 Oz. Type "G" Grease, No. 49-08-4140. 1.5 Oz. in each of two locations (See Illustration).		
54	42-28-0205	Front Blade Guide Block	(1)				
55	28-41-0510	Front Pulley Guard	(1)				
56	06-82-5330	10-32 x 5/8" Pan Hd. Tapt. T-25	(2)				
57	45-08-0172	Blade Release Shaft	(1)				
58	02-50-3236	Needle Bearing	(1)				
59	-----	Bandsaw Blade - Select From Catalog	(1)				



For 6225, Serial Break C through H: Armature (26) and Field (28) must be replaced as a set. Order Motor Service Kit (99), 14-50-1600.