

WIRING INSTRUCTIONS

TITLE

REGULAR CUT TWO SPEED BAND SAW

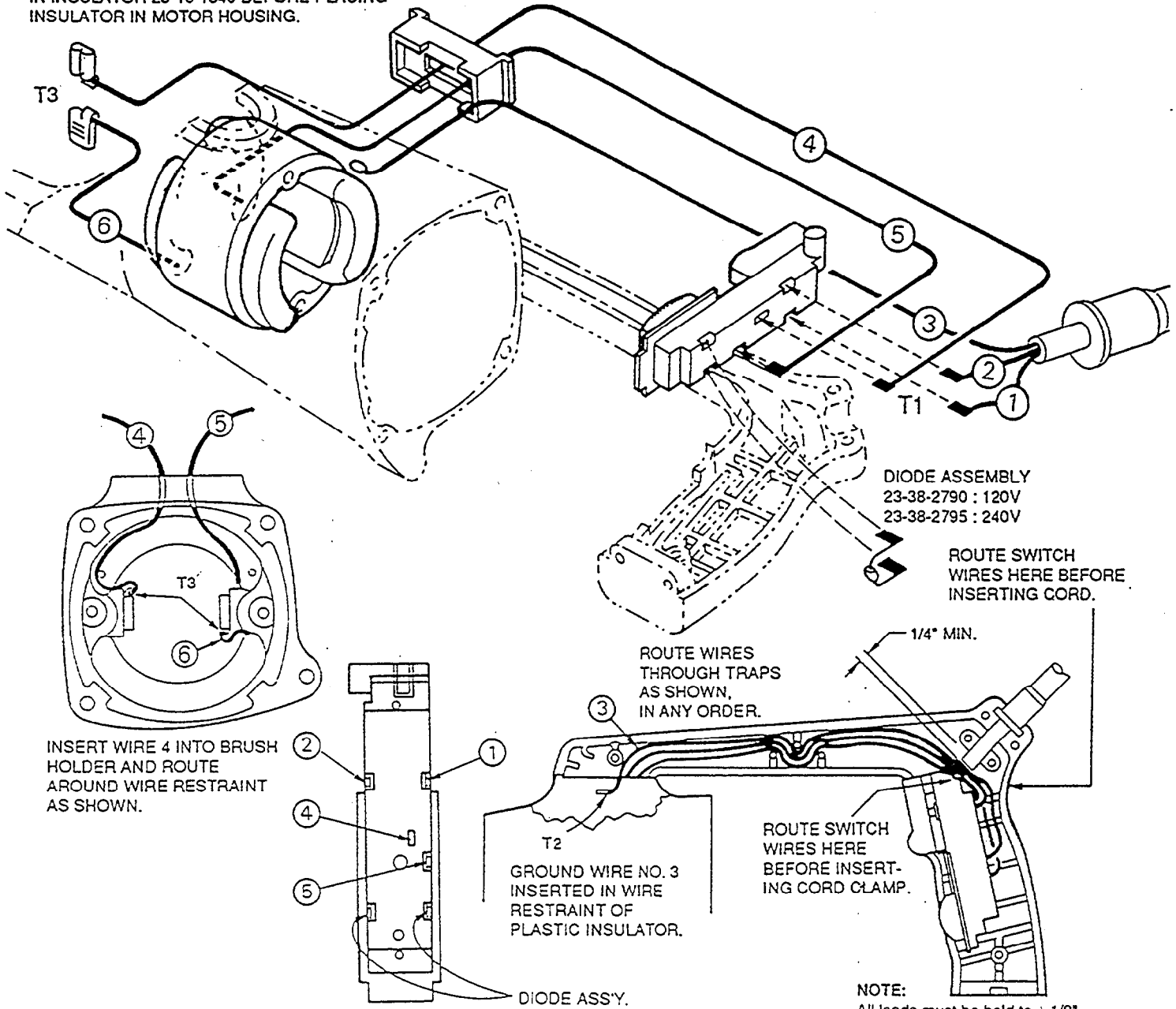
MILWAUKEE ELECTRIC TOOL CORP. 13135 WEST LISBON RD. BROOKFIELD, WIS.

DATE
Sept. '96

BULLETIN

58-01-0724

ROUTE WIRES 4 & 5 THRU LARGE OPENING IN INSULATOR 23-16-1340 BEFORE PLACING INSULATOR IN MOTOR HOUSING.



DIODE ASSEMBLY
23-38-2790 : 120V
23-38-2795 : 240V

ROUTE SWITCH WIRES HERE BEFORE INSERTING CORD.

ROUTE WIRES THROUGH TRAPS AS SHOWN, IN ANY ORDER.

T2
GROUND WIRE NO. 3 INSERTED IN WIRE RESTRAINT OF PLASTIC INSULATOR.

ROUTE SWITCH WIRES HERE BEFORE INSERTING CORD CLAMP.

DIODE ASS'Y.

NOTE:

All leads must be held to $\pm 1/8"$.
All field leads to be measured from and perpendicular to laminations.
All lead lengths are before stripping.

WIRING SPECIFICATIONS

Wire No.	Wire Color	Origin or Gauge	Length	Terminals, Connectors and 1 or 2 End Wire Preparation
1	White	Cord	2-1/4"	Strip 1/4" For T1.
2	Black	Cord	2-1/4"	Strip 1/4" For T1.
3	Green	Cord	9-1/4"	Strip 3/16" For T2.
4	Red	18	15"	Strip 1/4" For T1 / Strip 1/8" for T3.
5	Yellow	Field	14-1/4"	Strip 1/4" For T1.
6	White	Field	1-3/4"	Strip 1/8" For T3.

TERMINAL DESCRIPTION

Code	Part No.	Qty.
T1	22-44-0090	4
T2	23-74-0841	1
T3	23-74-0750	2

CONNECTOR DESCRIPTION

Code	Part No.	Qty.

BULK LEAD WIRE - BULLETIN NO. 58-01-0003