

## **Model 009 Cartridge Circulator**

The High Velocity series Taco 009 cartridge circulator is designed for quiet, efficient operation in higher-head/lower-flow applications for hydronic heating, radiant in-floor/panel heating, solar heating, heat recovery, and domestic water recirculation systems. Its unique field-serviceable cartridge contains all moving parts. Replacing the cartridge rebuilds the circulator. With no mechanical seal, the self-lubricating, maintenance free design provides unmatched reliability. Available in Cast Iron or Stainless Steel construction.



Low-Lead  
Compliant

# Submittal Data Information Model 009 Cartridge Circulator

Submittal Data # 101-032  
Supersedes: 05/08/13

Effective: 01/12/15

## Features

- Standard high capacity output-compact design
- Quiet, efficient operation
- Direct drive - Low power consumption
- Unique replaceable cartridge design — Field serviceable
- Self lubricating
- No mechanical seal
- Unmatched reliability - Maintenance free
- Universal flange to flange dimensions
- Cast Iron or Stainless Steel construction

## Materials of Construction

Casing (Volute):.....Cast Iron or St. Steel  
Stator Housing: .....Aluminum  
Cartridge:.....Stainless Steel  
Impeller: .....Non-Metallic  
Shaft:.....Ceramic  
Bearings:.....Carbon  
O-Ring & Gaskets:.....EPDM

## Model Nomenclature

F – Cast Iron, Flanged  
SF – Stainless Steel, Flanged

## Performance Data

Max. Flow: 10 GPM  
Max. Range: 35 Feet  
Min. Fluid Temperature: 40°F (4°C)  
Max. Fluid Temperature: 230°F (110°C)  
Max. Working Pressure: 150 psi  
Connection Sizes:  
3/4", 1", 1-1/4", 1-1/2" Flanged

## Certifications & Listings

 **UL US LISTED** FOR INDOOR USE ONLY

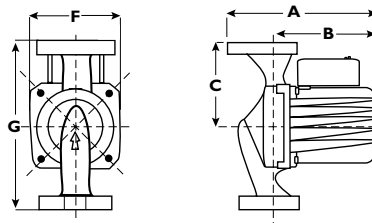
 **NSF Low-Lead Compliant**  
Certified to NSF/ANSI 372

## Application

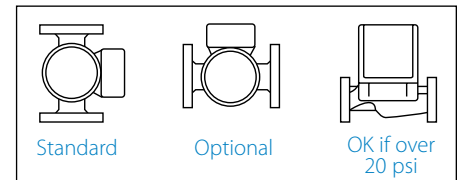
The Taco 009 is designed for a wide range of residential and light commercial higher-head/lower-flow water circulating applications. Typical uses include hydronic heating, radiant in-floor/panel heating and closed-loop solar heating systems. The Stainless Steel 009 can be used in higher-head/lower-flow heat recovery, open-loop solar heating and light commercial domestic water recirculation systems. The unique replaceable cartridge contains all of the moving parts and allows for easy service, instead of replacing the entire circulator. Compact, direct-drive, low power consumption design is ideal for high-efficiency jobs.

## Pump Dimensions & Weights

Models	Casing	A		B		C		D		F		G		Ship Wt.	
		in.	mm	in.	mm	in.	mm	in.	mm	in.	mm	in.	mm	lbs.	Kg
009-F5	Cast Iron	7	178	5-11/16	144	3-3/16	81	3-15/16	84	4-1/8	105	6-3/8	162	9.5	4.3
009-SF5	St. Steel	7	178	5-11/16	144	3-3/16	81	3-15/16	84	4-1/8	105	6-3/8	162	9.5	4.3



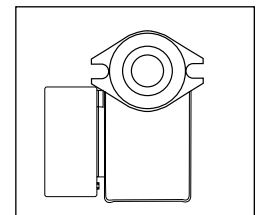
## Mounting Positions



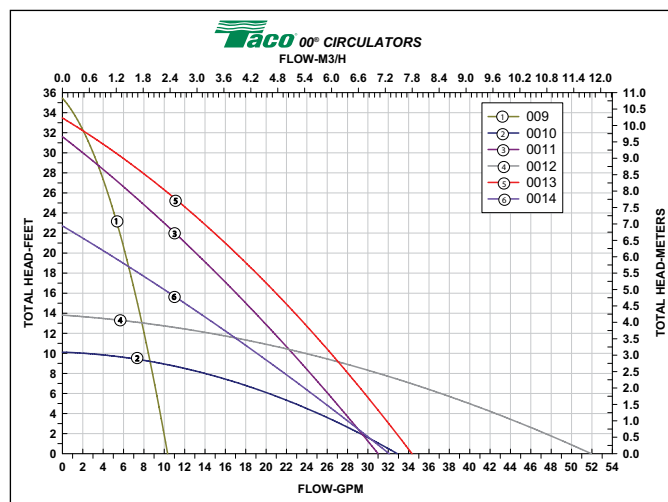
## Electrical Data

Model	Volts	Hz	Ph	Amps	RPM	HP
009-F5	115	60	1	1.40	3250	1/8
009-SF5	115	60	1	1.40	3250	1/8
Motor Type	Permanent Split Capacitor Impedance Protected					
Motor Options	220/50/1, 220/60/1, 230/60/1, 100/110/50/60/1					

## Flange Orientation



## Performance Field - 60Hz



  
Do your **best work.**<sup>®</sup>