



Submittal Data Information

101-032

Model 009 Cartridge Circulator

Effective: January 12, 2015

Supersedes: May 8, 2013

Job: _____ Engineer: _____ Contractor: _____ Rep: _____

ITEM NO.	MODEL NO.	IMP. DIA.	G.P.M.	HEAD/FT.	H.P.	ELEC. CHAR.

Features

- Standard high capacity output-compact design
- Quiet, efficient operation
- Direct drive - Low power consumption
- Unique replaceable cartridge design — Field serviceable
- Self lubricating
- No mechanical seal
- Unmatched reliability - Maintenance free
- Universal flange to flange dimensions
- Cast Iron or Stainless Steel construction

Application

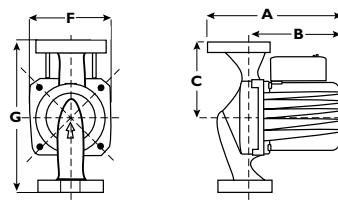
The Taco 009 is designed for a wide range of residential and light commercial higher-head/lower-flow water circulating applications. Typical uses include hydronic heating, radiant in-floor/panel heating and closed-loop solar heating systems. The Stainless Steel 009 can be used in higher-head/lower-flow heat recovery, open-loop solar heating and light commercial domestic water recirculation systems. The unique replaceable cartridge contains all of the moving parts and allows for easy service, instead of replacing the entire circulator. Compact, direct-drive, low power consumption design is ideal for high-efficiency jobs.

Pump Dimensions & Weights

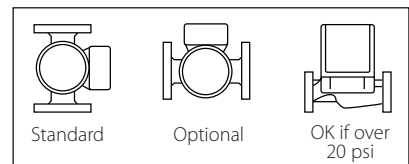
Models	Casing	A		B		C		D		F		G		Ship Wt.	
		in.	mm	in.	mm	in.	mm	in.	mm	in.	mm	in.	mm	lbs.	Kg
009-F5	Cast Iron	7	178	5-11/16	144	3-3/16	81	3-15/16	84	4-1/8	105	6-3/8	162	9.5	4.3
009-SF5	St. Steel	7	178	5-11/16	144	3-3/16	81	3-15/16	84	4-1/8	105	6-3/8	162	9.5	4.3

Materials of Construction

Casing (Volute):..... Cast Iron or St. Steel
 Stator Housing:..... Aluminum
 Cartridge:..... Stainless Steel
 Impeller: Non-Metallic
 Shaft:..... Ceramic
 Bearings:..... Carbon
 O-Ring & Gaskets:..... EPDM



Mounting Positions



Model Nomenclature

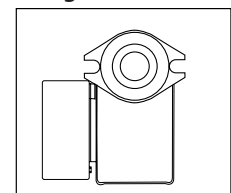
F – Cast Iron, Flanged
 SF – Stainless Steel, Flanged

Electrical Data

Model	Volts	Hz	Ph	Amps	RPM	HP
009-F5	115	60	1	1.40	3250	1/8
009-SF5	115	60	1	1.40	3250	1/8

Motor Type: Permanent Split Capacitor Impedance Protected
 Motor Options: 220/50/1, 220/60/1, 230/60/1, 100/110/50/60/1

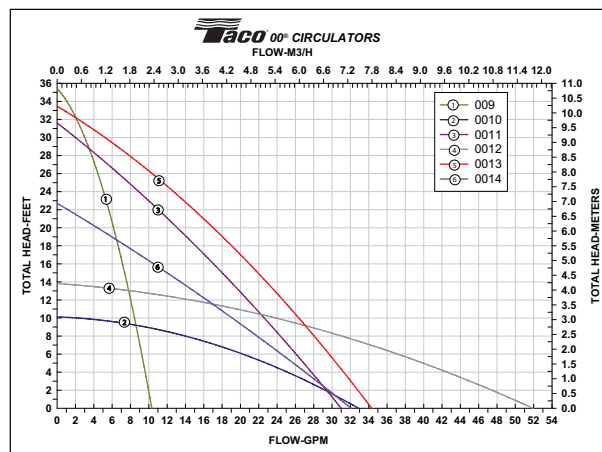
Flange Orientation



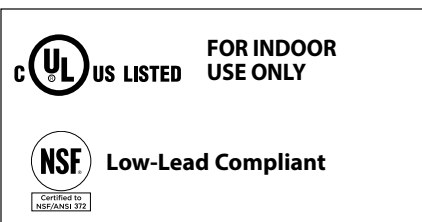
Performance Data

Max. Flow: 10 GPM
 Max. Range: 35 Feet
 Min. Fluid Temperature: 40°F (4°C)
 Max. Fluid Temperature: 230°F (110°C)
 Max. Working Pressure: 150 psi
 Connection Sizes:
 3/4", 1", 1-1/4", 1-1/2" Flanged

Performance Field - 60Hz



Certifications & Listings



Do your best work.®

TACO INC., 1160 Cranston Street, Cranston, RI 02920 Telephone: (401) 942-8000 Fax: 942-2360

TACO (Canada), Ltd., 6180 Ordan Drive, Mississauga, Ontario L5T 2B3 Telephone: (905) 564-9422 Fax: (905) 564-9436

Visit our website at: www.taco-hvac.com

Printed in USA

Copyright 2015

TACO, Inc.