

DEWALT®

ANCHORS & FASTENERS

Mechanical Anchoing



CODE LISTED

ICC-ES ESR-3889

CRACKED & UNCRACKED CONCRETE

CODE LISTED

ICC-ES ESR-4042

GROUTED CONCRETE BLOCK

NEW

**APPROVED FOR GROUTED
CONCRETE BLOCK (CMU)**
no load reduction in bed joints

Screw-Bolt+™

DEWALT

ANCHORS & FASTENERS



INTEGRATED WASHER

with serrations under the head secures the attachment

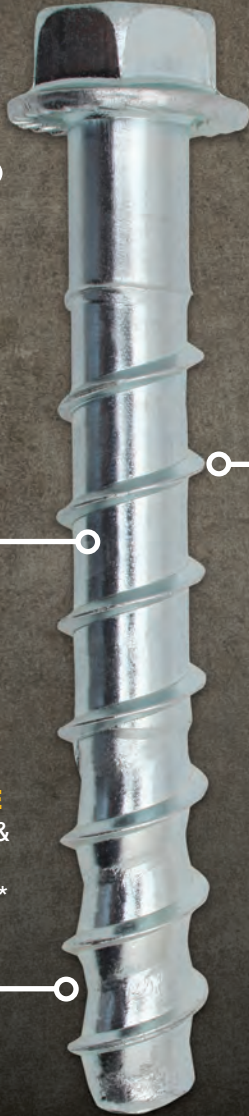


IDENTIFYING MARK

diameter, length and product marks embossed on head for easy identification

ENGINEERED STEEL

designed to cut through hard concrete and maintain ductility (bends before breaking)



STANDARD BIT

designed for ANSI carbide drill bits

DUST RELIEF THREAD PROFILE

improves speed & reduces effort for faster installation*



Normal Weight Concrete Light Weight Concrete Concrete Over Steel Deck Grouted Masonry Brick



Fast Installation*

Screw-Bolt+™ vs wedge anchor, (5/8" diameters)

22%
Faster Installation

DeWALT Screw-Bolt+™

Wedge Anchor

*Compared to 5/8" Power-Stud+ SD1 Wedge-Anchor, 5" deep in low strength concrete

	DeWALT Screw-Bolt+™		Hilti® Kwik HUS-EZ*	Simpson® Titen HD*	ITW Red Head® LDT*
ICC Approval	ESR-3889 Cracked & Uncracked Concrete	ESR-4042 Grouted Filled CMU	ESR-3027 Galvanized Not ICC Approved	ESR-2713 Galvanized Not ICC Approved	ESR-3699 5/8" & 3/4" Not ICC Approved
Coating	Zinc & Galvanized		Zinc	Zinc & Galvanized	Zinc & Evirex
ANSI Bit	Yes		Yes	Yes	Undersized Bit
Diameters	1/4" - 3/4"		1/4" - 3/4"	1/4" - 3/4"	3/8" - 3/4"
Matched Tool	DeWALT		Hilti Tools	No	No

*Hilti and Kwik HUS-EZ are registered trademarks of Hilti Corporation
 *Simpson and Titen HD are registered trademarks of Simpson Strong-Tie Company, Inc.
 *ITW and Redhead are registered trademarks of Illinois Tool Works, Inc.



Screw-Bolt+™ Concrete Screw Anchor

Typical Screw-Bolt+ Applications

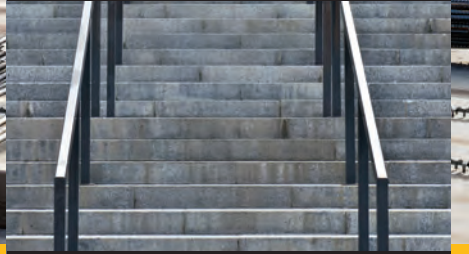
Concrete Construction



Structural



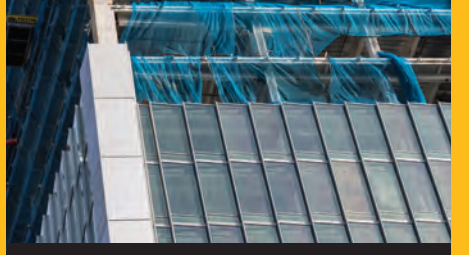
Racking



Fence and Rail



Drywall



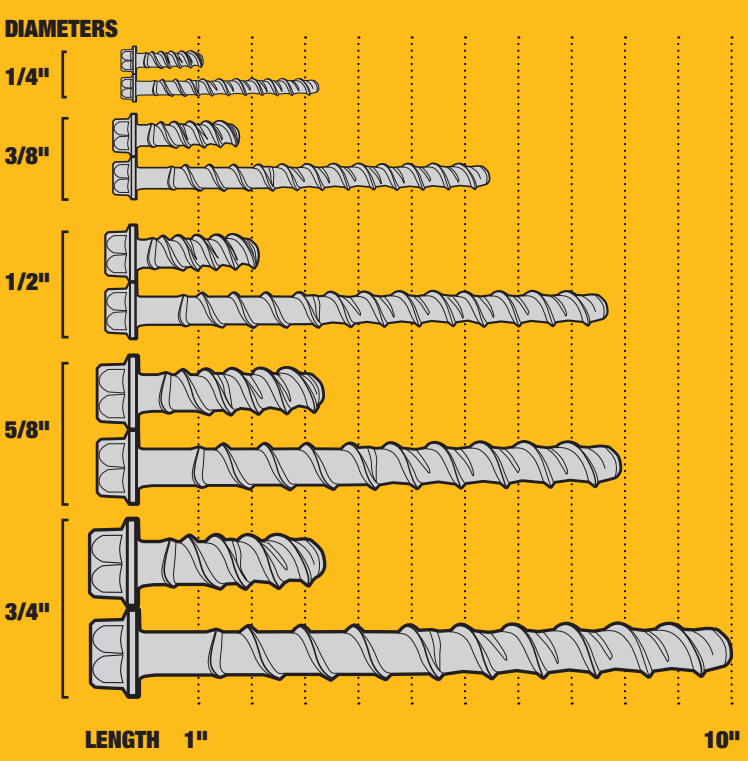
Glazing



Temporary Applications

Comprehensive Selection

A wide range of diameters and lengths (zinc & galvanized)







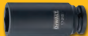
AVAILABLE IN MECHANICALLY GALVANIZED ZINC
approved for pressure treated lumber

CAT #		ZINC PLATED SCREW-BOLT+™		GALVANIZED SCREW-BOLT+™			
ZINC PLATED	GALVANIZED	ANCHOR	LENGTH	HOLE SIZE	SOCKET SIZE	QTY	MSTR QTY
*PFM1411000	-	1/4" x 1-1/4"	1-1/4"	1/4"	7/16"	100	600
PFM1411020	-	1/4" x 1-3/4"	1-3/4"	1/4"	7/16"	100	600
PFM1411060	-	1/4" x 2-1/4"	2-1/4"	1/4"	7/16"	100	600
PFM1411080	-	1/4" x 2-5/8"	2-5/8"	1/4"	7/16"	100	500
PFM1411100	-	1/4" x 3"	3"	1/4"	7/16"	100	500
*PFM1411160	-	3/8" x 1-3/4"	1-3/4"	3/8"	9/16"	50	300
PFM1411220	-	3/8" x 2-1/2"	2-1/2"	3/8"	9/16"	50	300
PFM1411240	PFM1461240	3/8" x 3"	3"	3/8"	9/16"	50	250
PFM1411280	PFM1461280	3/8" x 4"	4"	3/8"	9/16"	50	250
PFM1411300	PFM1461300	3/8" x 5"	5"	3/8"	9/16"	50	250
PFM1411320	PFM1461320	3/8" x 6"	6"	3/8"	9/16"	50	150
*PFM1411340	-	1/2" x 2"	2"	1/2"	3/4"	50	200
PFM1411360	-	1/2" x 2-1/2"	2-1/2"	1/2"	3/4"	50	200
PFM1411380	-	1/2" x 3"	3"	1/2"	3/4"	50	150
PFM1411420	PFM1461420	1/2" x 4"	4"	1/2"	3/4"	50	150
PFM1411460	PFM1461460	1/2" x 5"	5"	1/2"	3/4"	25	100
PFM1411480	PFM1461480	1/2" x 6"	6"	1/2"	3/4"	25	75
PFM1411520	PFM1461520	1/2" x 8"	8"	1/2"	3/4"	25	100
*PFM1411540	-	5/8" x 3"	3"	5/8"	15/16"	25	100
PFM1411580	-	5/8" x 4"	4"	5/8"	15/16"	25	100
PFM1411600	PFM1461600	5/8" x 5"	5"	5/8"	15/16"	25	75
PFM1411640	PFM1461640	5/8" x 6"	6"	5/8"	15/16"	25	75
PFM1411680	PFM1461680	5/8" x 8"	8"	5/8"	15/16"	25	50
*PFM1411700	-	3/4" x 3"	3"	3/4"	1-1/8"	20	60
*PFM1411720	-	3/4" x 4"	4"	3/4"	1-1/8"	20	60
PFM1411760	-	3/4" x 5"	5"	3/4"	1-1/8"	20	60
PFM1411800	PFM1461800	3/4" x 6"	6"	3/4"	1-1/8"	20	60
PFM1411840	PFM1461850	3/4" x 8"	8"	3/4"	1-1/8"	10	40
PFM1411880	-	3/4" x 10"	10"	3/4"	1-1/8"	10	20

* denotes sizes which are less than the minimum standard anchor length for Strength Design. The published size length of the anchor is measured from under the head.

Concrete Screw Anchor System



20V MAX** SDS PLUS ROTARY HAMMERS			FLEXVOLT® SDS MAX	20V MAX** IMPACT WRENCHES		
DCH273P2DH 1" L-Shape	DCH133M2 1" D-Handle	DCH293R2 1-1/8" L-Shape w/ E-Clutch	DCH481X2 1-9/16" W/ E-Clutch	DCF883L2 3/8" Impact Wrench	DCF880M2 1/2" Impact Wrench	DCF899P2 High Torque 1/2" (Speed #2)
CARBIDE BITS				IMPACT RATED SOCKETS		
						
DW5517	DW5417	DW5417	–	DWMT74479B	–	–
DW5517	DW5417	DW5417	–	DWMT74479B	–	–
DW5517	DW5417	DW5417	–	DWMT74479B	–	–
DW5517	DW5417	DW5417	–	DWMT74479B	–	–
DW5517	DW5417	DW5417	–	DWMT74479B	–	–
DW5527	DW5427	DW5427	–	–	DWMT75122B	–
DW5527	DW5427	DW5427	–	–	DWMT75122B	–
DW5527	DW5427	DW5427	–	–	DWMT75122B	–
DW5527	DW5427	DW5427	–	–	DWMT75122B	–
DW5529	DW5429	DW5429	–	–	DWMT75122B	–
DW5529	DW5429	DW5429	–	–	DWMT75122B	–
DW5537	DW5437	DW5437	–	–	–	DWMT75113B
DW5537	DW5437	DW5437	–	–	–	DWMT75113B
DW5537	DW5437	DW5437	–	–	–	DWMT75113B
DW5537	DW5437	DW5437	–	–	–	DWMT75113B
DW5538	DW5438	DW5438	–	–	–	DWMT75113B
DW5538	DW5438	DW5438	–	–	–	DWMT75113B
DW5538	DW5438	DW5438	–	–	–	DWMT75113B
DW5471	DW5446	DW5471	DW5806	–	–	DWMT75104B
DW5471	DW5446	DW5471	DW5806	–	–	DWMT75104B
DW5471	DW5446	DW5471	DW5806	–	–	DWMT75104B
DW5471	DW5446	DW5471	DW5806	–	–	DWMT75104B
DW5471	DW5447	DW5471	DW5806	–	–	DWMT75104B
DW5474	DW5453	DW5474	DW5810	–	–	DWMT75125B
DW5474	DW5453	DW5474	DW5810	–	–	DWMT75125B
DW5474	DW5453	DW5474	DW5810	–	–	DWMT75125B
DW5474	DW5453	DW5474	DW5810	–	–	DWMT75125B
DW5474	DW5455	DW5474	DW5810	–	–	DWMT75125B
DW5475	DW5455	DW5475	DW5812	–	–	DWMT75125B

Maximum **Optimum** – (Not Recommended)

** Maximum initial battery voltage (measured without a workload) is 20 volts. Nominal voltage is 18.



ANCHORS & FASTENERS

Screw-Bolt+™ Concrete Screw Anchor

DeWALT LOCATIONS			Field Service	DeWALT Tool Service	Anchor Distribution Center
ALABAMA	Birmingham	205-942-0538			
	Mobile	251-602-1000			
ALASKA	Anchorage	907-561-7181			
ARKANSAS	Little Rock	501-372-3040			
ARIZONA	Phoenix	602-437-1200			
	Phoenix	602-431-8024			
CALIFORNIA	San Francisco	510-783-3959			
	Hayward	510-293-1500			
	San Diego	858-279-2011			
	Anaheim	714-414-0369			
	Sacramento	916-344-3520			
	Ontario	909-930-1437			
COLORADO	Tustin	714-731-2500			
	Denver	303-922-8325			
CONNECTICUT	Denver	303-922-9202			
	Hartford	860-563-5800			
FLORIDA	Ft. Lauderdale	954-321-6635			
	Tampa	813-884-0434			
	Orlando	407-657-0474			
	Orlando	813-626-4500			
	W. Palm Beach	561-689-3247			
GEORGIA	Atlanta	770-246-1710			
	Atlanta	678-966-0000			
HAWAII	Honolulu	808-842-9925			
IOWA	Des Moines	515-270-1340			
ILLINOIS	Addison	630-521-1097			
	Addison	630-960-3156			
INDIANA	Indianapolis	317-243-8308			
	Indianapolis	317-773-1668			
KANSAS	Kansas City	913-495-4330			
	Kansas City	816-472-5033			
	Wichita	316-943-1271			
KENTUCKY	Louisville	502-380-3748			
LOUISIANA	New Orleans	504-832-2187			
	Baton Rouge	225-296-3191			
MARYLAND	Baltimore	410-536-0722			
	Capital Heights	301-333-0865			
	Baltimore / DC	301-773-1722			
MASSACHUSETTS	Boston	781-329-3407			
MICHIGAN	Grand Rapids	616-261-0425			
	Detroit	248-597-5000			
	Detroit	248-543-8600			
MINNESOTA	Minneapolis	952-884-9191			
	Minneapolis	612-331-3770			
MISSOURI	St Louis	314-997-9100			
	Kansas City	816-472-5033			
NEVADA	Las Vegas	702-889-6025			
NEW JERSEY	Elmwood Park	201-475-3524			

DeWALT LOCATIONS			Field Service	DeWALT Tool Service	Anchor Distribution Center
NEW MEXICO	Albuquerque	505-884-1002			
NEW YORK	Buffalo	716-884-6220			
	Queens	718-335-1042			
	Rochester	585-228-2080			
	Long Island	631-952-2008			
	Albany	518-785-1867			
	New York	800-524-3244			
NORTH CAROLINA	Charlotte	704-392-0245			
	Charlotte	704-375-5012			
	Greensboro	336-852-1300			
	Raleigh	919-878-0357			
OHIO	Cleveland	440-842-9100			
	Cincinnati	513-772-3111			
	Columbus	614-895-3112			
OKLAHOMA	Oklahoma City	405-634-8403			
	Tulsa	918-249-8641			
OREGON	Portland	503-255-6556			
PENNSYLVANIA	Philadelphia	215-271-5500			
	Pittsburgh	412-642-0204			
	Allentown	610-435-9544			
	York	717-755-3441			
SOUTH CAROLINA	Charleston	843-745-9197			
	Greenville	864-299-8662			
TENNESSEE	Memphis	901-384-8100			
	Nashville	615-242-1633			
	Nashville	615-248-2667			
	Knoxville	865-688-0921			
TEXAS	Dallas	972-446-2996			
	Dallas	972-446-5985			
	Houston	713-466-1194			
	Houston	281-491-0351			
	San Antonio	210-732-1221			
	Fort Worth	817-831-3828			
	Austin	512-382-3971			
UTAH	Salt Lake City	801-486-5828			
	Salt Lake City	801-466-9428			
VIRGINIA	Virginia Beach	757-363-0091			
WASHINGTON	Seattle	206-763-2010			
	Spokane	509-535-9252			
	Seattle	425-251-0312			
WEST VIRGINIA	Charleston	304-343-0289			
WISCONSIN	Milwaukee	414-645-4285			
	Milwaukee	414-645-8821			

DeWALT, ELCO, & POWERS Anchors and Fasteners Inquiries: 800-524-3244

DeWALT, ELCO, & POWERS Anchors and Fasteners Technical Questions: email: anchors@dewalt.com

Dealer Stamp

1-800-4 DEWALT

www.DEWALT.com

Copyright © 2021 DEWALT. The yellow/black color scheme is a trademark for DEWALT power tools, accessories, anchors & concrete adhesives.