

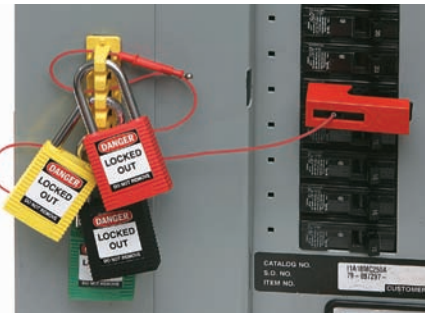
Circuit Breaker Lockouts

BradyID.com/s36

EZ Paneloc™ System

- Works on wide range of breakers, including single- and multi-pole configurations
- Can be used with most padlocks by making use of unique lock rail system
- Allows panel door to be closed even when lockouts are in place
- Accommodates multiple locks, facilitating group lockout activity without hasps
- Keeps weight off the breakers, protecting delicate electrical components
- Positions locks and tags outside the panel, making sure lockout activity is clearly visible to anyone in the area

(Not recommended for use with multi-lock hasps)



Snap-On Lockout

- For use on Square D NQO and other breakers with a hole in the switch tongue
- Align pins with holes in breaker and snap closed
- Pins prevent switch from being thrown
- Size: 0.90 in. x 1.88 in. x 0.74 in.
- Rails sold separately

Catalog #	Description	Qty.
51252	Snap-On Lockout w/ 2 in. Cable	1
65815	Snap-On Lockout w/ 2 in. Cable	6



Clamp-On Lockout

- For use on breakers that do not have a hole in the switch tongue
- Turn thumbscrew to clamp lockout securely onto switch, then snap the cover closed to prevent thumbwheel from being loosened
- Size: 0.95 in. x 2.56 in. x 0.74 in.
- Rails sold separately

Catalog #	Description	Qty.
51254	Clamp-On Lockout w/ 2 in. Cable	1
65810	Clamp-On Lockout w/ 2 in. Cable	6



Spacing Gasket and Lock Rails

- For low profile panels
- Self-adhesive gasket pushes out low profile panel frame adding an additional 0.375 in. of clearance between the panel and the door
- Lock rails made of durable isoplast polymers with acrylic adhesive backing

Catalog #	Description	Qty.
51256	4 in. Lock Rail (7 loops)	1
65814	4 in. Lock Rail (7 loops)	6
51258	8 in. Lock Rail (15 loops)	1
51260	8 in. Lock Rail (15 loops)	6
89256	Spacing Gasket 0.375 in. x 1 in. x 15 ft.	1

Lockout Tagout

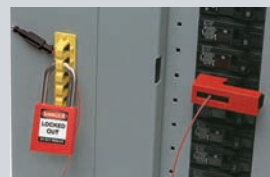
EZ Paneloc System In Action



1. Expose the super-bond adhesive on back of rail. Permanently affix to any location on the panel.



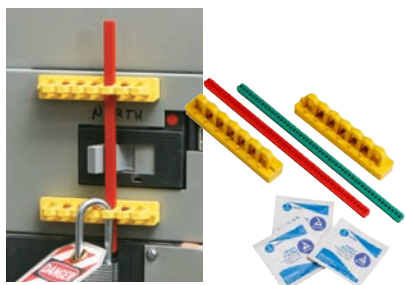
2. Attach the lockout device to the breaker and snap into locked position.



3. Pass plastic key through lock rail and attach lock, preventing key from sliding down cable to device.



4. After procedure is finished, unlock device by inserting and turning the black plastic key.



480-600V Breaker Blocker

- For oversized and irregularly shaped switches
- Self-adhesive backed rails are permanently installed onto panel
- Blocking bars are 7.6 in. long
- Red blocking bar indicates locked off, green bar indicates locked on

Catalog #	Description	Qty.
90891	Breaker Block Kit*	1
90892	7.6 in. Red Blocking Bar	5
90893	7.6 in. Green Blocking Bar	5
51264	4 in. Yellow Mounting Rails	2
51265	Blocking Bar Holder	5

*Kit includes 2 yellow mounting rails, 1 red blocking bar, 1 green blocking bar and 3 alcohol wipes.



120/277V and 480/600V Clamp-On Breaker Lockout

- Works on a wide range of single-pole and internal-trip multi-pole breakers
- Use thumbscrew to clamp lockout onto switch tongue, then pull cover over thumbscrew and lock in place
- Accepts lock shackles up to 0.28 in.
- Detachable cleats expand the range of applicable breakers

Catalog #	Description	Qty.
65396	120/277V Clamp-On w/ Cleat	1
65965	120/277V Clamp-On w/ Cleat	6
65397	480/600V Clamp-On w/ Cleat	1
65966	480/600V Clamp-On w/ Cleat	6



Universal Multi-Pole Breaker Lockout

- Single device works with most major multi-pole breakers that employ a tie-bar
- Made of durable impact-modified nylon
- Use thumbscrew to clamp lockout securely over tie bar, then insert lock to prevent clamp from being loosened

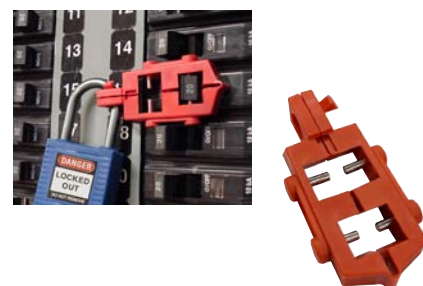
Catalog #	Description	Qty.
66321	Universal Multi-Pole Breaker Lockout	1
66320	Universal Multi-Pole Breaker Lockouts	6



Oversized 480/600V Clamp-On Breaker Lockout

- Oversized 480/600V frame lockout fits breaker switches up to 2.25 in. wide and 0.875 in. thick
- Made of durable polypropylene and glass-filled, impact-modified nylon

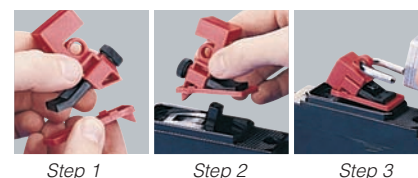
Catalog #	Description	Qty.
65329	Oversized Breaker Lockout	1
65321	Oversized Breaker Lockout	6



120V Snap-On Breaker Lockout

- Designed for 120V breakers with holes in the switch tongue
- Quick and easy – just snap in place and apply lock
- Dual cavities accommodate different size switch tongues
- Accepts lock shackles up to 0.28 in. dia.
- Dimensions: 0.83 in. x 0.35 in. x 2.15 in.

Catalog #	Description	Qty.
65387	120V Snap-On Breaker Lockout	1
65688	120V Snap-On Breaker Lockouts	6



Step 1 Step 2 Step 3



Extra Cleats for Clamp-On Breaker Lockout

- Use in conjunction with clamp-on breaker lockouts (sold separately) to expand the range of applicable breakers that can be locked out
- Easily clips onto the bottom of the lockout body
- Assures positive restraint for breakers with long, sliding switch throws

Catalog #	Description	Qty.
65404	Extra Cleats For 120/277V Lockout	6
65406	Extra Cleats For 480/600V Lockout	6