

BUTTERFLY VALVE



VALVE SOLUTIONS for Corrosive Applications



UNPPolyvalves

Manufacturer of PFA/FEP/PTFE Lined & Plastic Valves,
Pipes & Pipe Fittings



VALVE SOLUTIONS for Corrosive Applications



About Us

UNPPolyvalves has manufactured valves since 1988. We started with PVDF and PPH valves but quickly added fluoropolymer lined metallic valves to our product line.

We offer Ball, Plug, Butterfly, Diaphragm valves, Non-return valves, Strainers, Saming valves, and also fluoropolymer lined pipe and fittings. We have a solution for your corrosive application.

Our modern facility utilizes a high capacity molding operation to manufacture lined valves up to 24". We also have India's highest capacity injection molding machines.

Our vision is to provide the Global Chemical & Industrial market with the highest quality valves. We understand our customers need for reliability and performance in a world driven by Health, Safety, and Environmental risks.

Our products are used in more than 35 countries around the world including North and South America, Europe, Asia, and Africa.

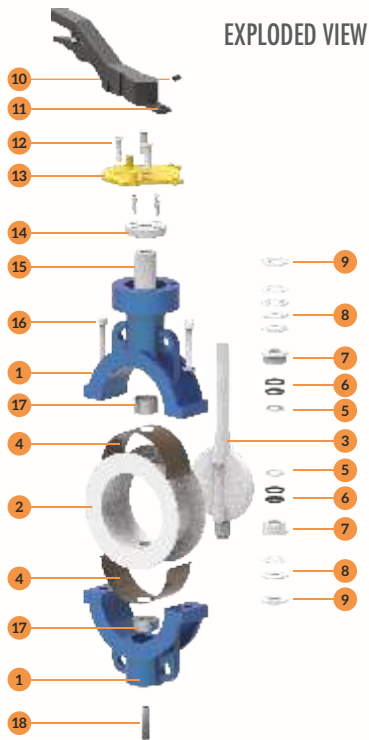
GENERAL PRODUCT INFORMATION

BUTTERFLY VALVES	FEATURE OFFERED	OPTIONS AVAILABLE
APPLICATIONS	MOST CORROSIVE & AGGRESSIVE CHEMICALS & VAPOURS	
STANDARDS FOLLOWED	DESIGN : API 609 WAFER & LUG FACE TO FACE DIMENSIONS : API 609 CATEGORY : A CONNECTION RATING : ANSI B 16.5 TEST : API 598	TEST : ISO 9393-2 OR BS EN 12266-1-2003
BODY	ASTM A 216 GR. WCB	ASTM A 351 GR. CF8 OR 8M
DISC LINING MATERIALS	PFA	FEP/PVDF/ETFE/ECTFE & PPH
SEAT / LINERS	ISOSTATICALLY MOULDED PTFE	ISOSTATICALLY MOULDED TFM / OR MPTFE
VALVE PAINTING	EPOXY 2 PART PAINT	PU PAINT
TEMPERATURE	- 40 DEG.F TO 450 DEG. F (PFA)	LINING IN FEP, ETFE & PVDF IS AVAILABLE WITH DIFF TEMPERATURE RANGE
DISC SEALING	CLASS VI, TIGHT SHUT OFF AS PER API 598	
SHAFT SEALS	LOADED PACKING WITH GLAND COVERS ON TOP & BOTTOM	
MAX. PRESSURE	225 PSI	
FLOW DIRECTION	BI-DIRECTIONAL	
SPARK TEST FOR LINED COMPONENTS	20 KVDC	

LINED BUTTERFLY VALVES

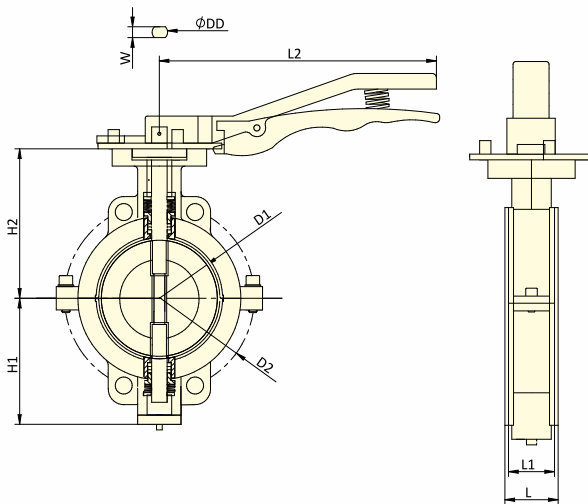
LEVER OPERATED – WAFER

MATERIAL LIST



PART NO.	DESCRIPTION	MATERIAL OF CONSTRUCTION	QTY.
1	Body	ASTM A 216 GR. WCB	2
2	Seat	PTFE / MPTFE / TFM	1
3	Disc	ASTM A 890 GR. 4A + PFA	1
4	Seat Pad	VITON / SILICON	2
5	Washer	PTFE	2
6	Gland Seals	VITON	4
7	T-Bush	SS 304	2
8	Disc Springs	50 Crv 4	6
9	Retainer	SS 304	2
10	Pin For Handle	STEEL	1
11	Handle	WCB	1
12	Allen CSK	HT 12.9	3
13	Teeth Plate	WCB / SS	1
14	Thrust Collar Top	SS 304	1
15	Sleeve	SS 304	1
16	Body Bolts	ASTM 193 GR. B7	2
17	Bush	PFA	1
18	Grub Screw	STEEL	1

SECTIONAL VIEW



DIMENSIONS

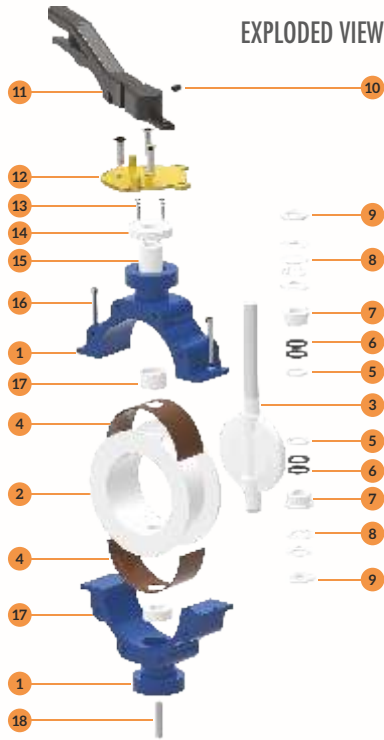
Size	L ± .12		L1 ± .04		D1 ± .08		D2 ± .08		H1 ± .31		H2 ± .31		L2 ± .31		ØDD		W	
	INCH	MM	INCH	MM	INCH	MM	INCH	MM	INCH	MM	INCH	MM	INCH	MM	INCH	MM	INCH	MM
2"	1.85	47	1.69	43	1.97	60	4.76	121	3.27	83	4.6	117	10.47	266	0.55	14	0.43	11
2.5"	1.97	50	1.81	46	2.55	65	5.51	140	3.54	90	5.39	137	10.47	266	0.55	14	0.43	11
3"	1.97	50	1.81	46	2.95	75	6	152	3.54	90	5.04	128	10.47	266	0.55	14	0.43	11
4"	2.2	56	2.04	52	3.93	100	7.5	191	4.52	115	6.14	156	10.47	266	0.71	18	0.55	14

All Dimension are in Inches & mm.
PCD of the Valve can be provided in ANSI / DIN / JIS



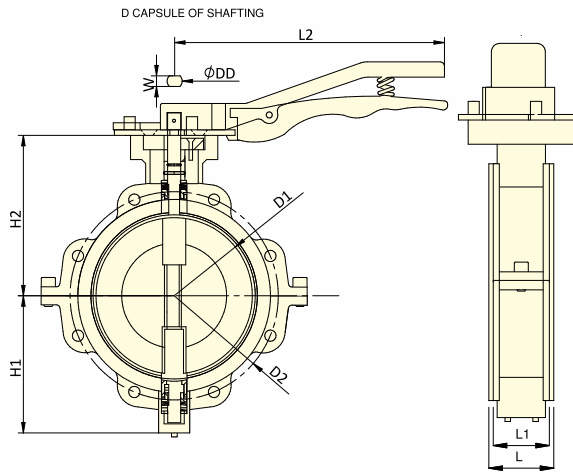
LINED BUTTERFLY VALVES
LEVER OPERATED – FULL LUG

MATERIAL LIST



PART NO.	DESCRIPTION	MATERIAL OF CONSTRUCTION	QTY.
1	Body	ASTM A 216 GR. WCB	2
2	Seat	PTFE / MPTFE / TFM	1
3	Disc	ASTM A 890 GR. 4A + PFA	1
4	Seat Pad	VITON / SILICON	2
5	Washer	PTFE	2
6	Gland Seals	VITON	4
7	T-Bush	SS 304	2
8	Disc Springs	50 Crv 4	6
9	Retainer	SS 304	2
10	Pin For Handle	STEEL	1
11	Handle	WCB	1
12	Teeth Plate	WCB / SS	1
13	Thrust Collar CSK Bolts	HT 12.9	4
14	Thrust Collar Top	HT 12.9	1
15	Sleeve	SS 304	1
16	Body Bolts	ASTM 193 GR. B7	2
17	Bush	PFA	2
18	Grub Screw	STEEL	1

SECTIONAL VIEW



DIMENSIONS

Size	L ± .12		L1 ± .04		D1 ± .08		D2 ± .08		H1 ± .31		H2 ± .31		L2 ± .31		ØDD		W	
	INCH	MM	INCH	MM	INCH	MM	INCH	MM	INCH	MM	INCH	MM	INCH	MM	INCH	MM	INCH	MM
2"	1.85	47	1.69	43	1.97	60	4.76	121	3.27	83	4.6	117	10.47	266	0.55	14	0.43	11
2.5"	1.97	50	1.81	46	2.55	65	5.51	140	3.54	90	5.39	137	10.47	266	0.55	14	0.43	11
3"	1.97	50	1.81	46	2.95	75	6	152	3.62	92	5.03	128	10.47	266	0.55	14	0.43	11
4"	2.2	56	2.04	52	3.93	100	7.5	191	4.52	115	6.18	157	10.47	266	0.71	18	0.55	14

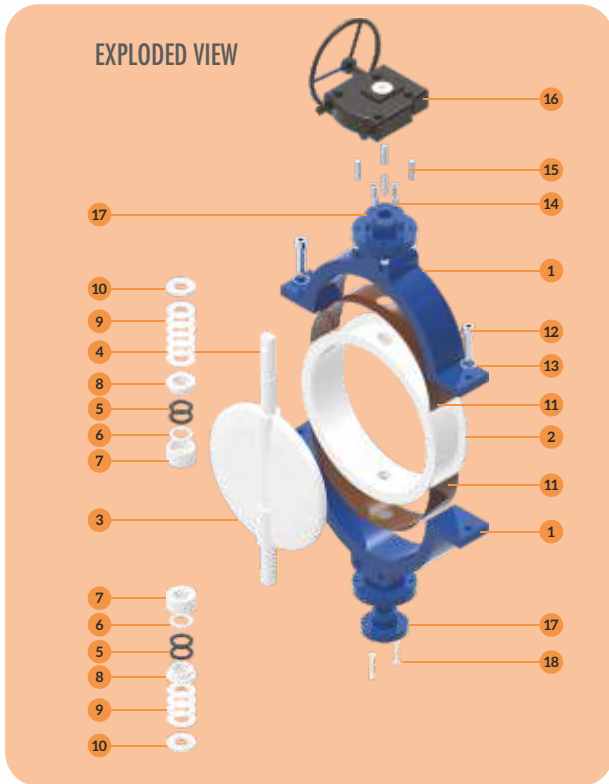
All Dimension are in Inches & mm.
PCD of the Valve can be provided in ANSI / DIN / JIS

LINED BUTTERFLY VALVES

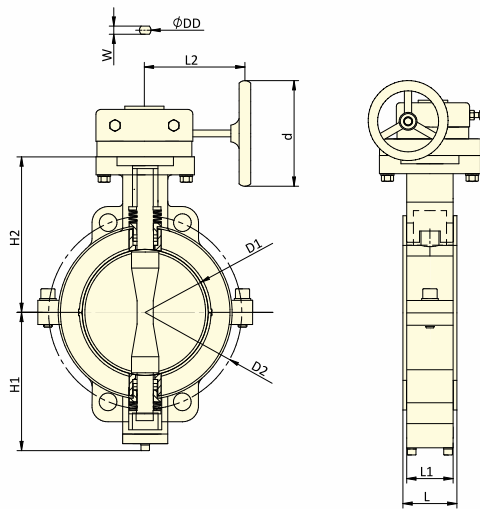
GEAR OPERATED – WAFER

MATERIAL LIST

PART NO.	DESCRIPTION	MATERIAL OF CONSTRUCTION	QTY.
1	Body	ASTM A 216 GR. WCB	2
2	Seat	PTFE / MPTFE / TFM	1
3	Disc	ASTM A 890 GR. 4A + PFA	1
4	Stem	ASTM A 890 GR. 4A Integral	1
5	Gland Seals	VITON	4
6	Washer	PTFE	2
7	Bush	PFA	2
8	T-Bush	SS 304	2
9	Disc Springs	50 Crv 4	10
10	Retainer	SS 304	2
11	Seat Pads	VITON / SILICON	2
12	Body Bolts	ASTM 193 GR. B7	4
13	Spring Washer	STEEL	2
14	Gland Bolts	HT 12.9	2
15	Gearbox Mounting Stud	SS 304	4
16	Gear Box	Cast Iron Epoxy Painted	1
17	Thrust Collar	SS 304	2
18	Bottom Cover Bolts	HT 12.9	2



SECTIONAL VIEW



DIMENSIONS

Size	L ± .12		L1 ± .04		D1 ± .08		D2 ± .08		H1 ± .31		H2 ± .31		L2 ± .31		ØDD		W	
	INCH	MM	INCH	MM	INCH	MM	INCH	MM	INCH	MM	INCH	MM	INCH	MM	INCH	MM	INCH	MM
6"	2.36	60	2.2	56	5.9	150	9.49	241	6.37	162	7.63	194	9.52	242	0.79	20	0.55	14
8"	2.52	64	2.36	60	7.87	200	11.75	298	7.2	183	9.25	235	9.52	242	0.98	25	0.79	19
10"	2.83	72	2.68	68	9.84	250	14.25	362	9.21	234	9.88	251	11.49	292	1.1	28	0.86	22
12"	3.3	84	3.07	78	11.81	300	17	432	10.66	271	11.57	294	11.49	292	1.1	28	0.86	22
14"	3.3	84	3.07	78	13.78	350	18.7	476	12.2	310	12.79	325	11.49	292	1.1	28	0.86	22
16"	4.25	108	4.01	102	15.74	400	21.25	540	13.18	335	13.58	345	13.18	335	1.41	36	1.1	28
18"	4.72	120	4.49	114	17.71	450	22.75	578	15.55	395	14.76	375	13.18	335	1.41	36	1.1	28
20"	5.23	133	5	127	19.44	494	25	635	16.73	425	16.33	415	13.58	345	1.79	45.5	1.41	36
24"	6.29	160	6.06	154	23.54	600	29.52	749	18.7	475	19.48	495	13.58	345	2	51	1.45	37

All Dimension are in Inches & mm. | PCD of the Valve can be provided in ANSI / DIN / JIS

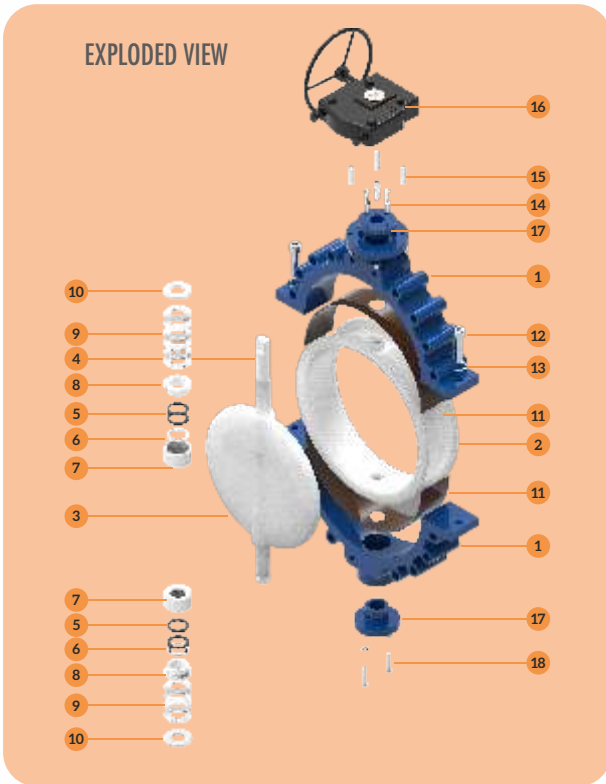


LINED BUTTERFLY VALVES

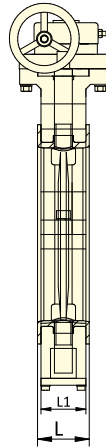
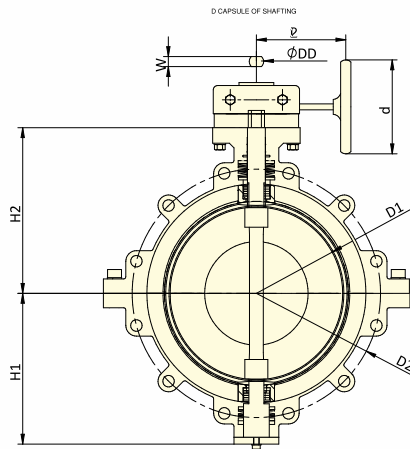
GEAR OPERATED – FULL LUG

MATERIAL LIST

PART NO.	DESCRIPTION	MATERIAL OF CONSTRUCTION	QTY.
1	Body	ASTM A 216 GR. WCB	2
2	Seat	PTFE / MPTFE / TFM	1
3	Disc	ASTM A 890 GR. 4A + PFA	1
4	Stem	ASTM A 890 GR. 4A Integral	1
5	Gland Seals	VITON	4
6	Washer	PTFE	2
7	Bush	PFA	2
8	T-Bush	SS 304	2
9	Disc Springs	50 Crv 4	10
10	Retainer	SS 304	2
11	Seat Pads	VITON / SILICON	2
12	Body Bolts	ASTM 193 GR. B7	2
13	Spring Washer	STEEL	2
14	Gland Bolts	HT 12.9	2
15	Gearbox Mounting Stud	SS 304	4
16	Gear Box	Cast Iron Epoxy Painted	1
17	Thrust Collar	SS 304	2
18	Bottom Cover Bolts	HT 12.9	2



SECTIONAL VIEW



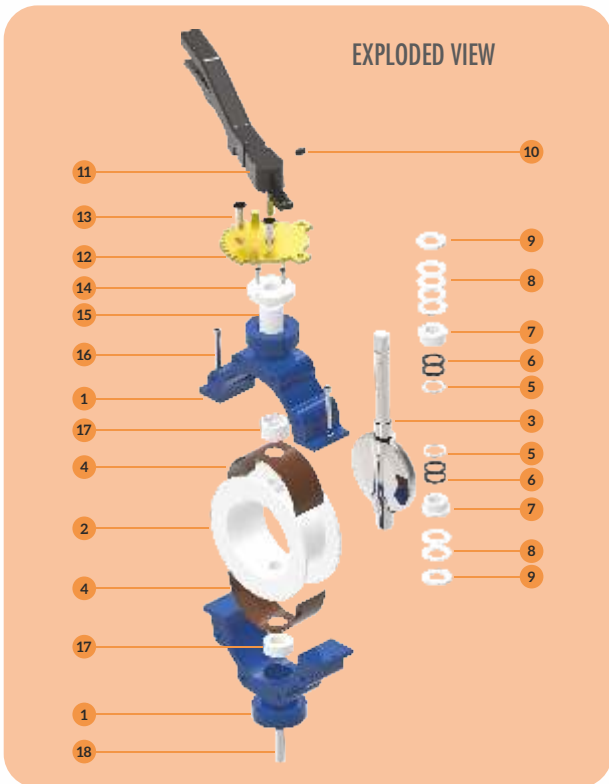
DIMENSIONS

Size	L ± .12		L1 ± .04		D1 ± .08		D2 ± .08		H1 ± .31		H2 ± .31		L2 ± .31		ØDD		W	
	INCH	MM	INCH	MM	INCH	MM	INCH	MM	INCH	MM	INCH	MM	INCH	MM	INCH	MM	INCH	MM
6"	2.36	60	2.2	56	5.9	150	9.49	241	6.4	163	7.48	190	9.52	242	0.79	20	0.55	14
8"	2.52	64	2.36	60	7.87	200	11.75	298	7.79	198	9.13	232	9.52	242	0.98	25	0.74	19
10"	2.83	72	2.68	68	9.84	250	14.25	362	8.58	218	9.84	250	11.49	292	1.1	28	0.86	22
12"	3.3	84	3.07	78	11.81	300	17	432	10.43	265	11.33	288	11.49	292	1.1	28	0.86	22
14"	3.3	84	3.07	78	13.78	350	18.7	476	12.55	319	12.44	316	11.49	292	1.1	28	0.86	22
16"	4.25	108	4.01	102	15.74	400	21.25	540	13.19	335	13.58	345	13.18	335	1.41	36	1.1	28
18"	4.72	120	4.49	114	17.71	450	22.75	578	15.74	400	14.72	374	13.18	335	1.41	36	1.1	28
20"	5.23	133	5	127	19.44	494	25	635	16.73	425	16.33	415	13.58	345	1.79	45.5	1.41	36
24"	6.29	160	6.06	154	23.54	600	29.52	749	19.37	492	19.88	505	13.58	345	2	51	1.45	37

All Dimension are in Inches & mm. | PCD of the Valve can be provided in ANSI / DIN / JIS

METAL DISC BUTTERFLY VALVES

LEVER & GEAR OPERATED - FULL LUG & WAFER

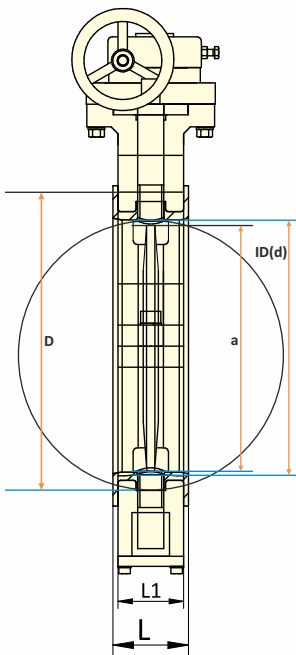


MATERIAL LIST

PART NO.	DESCRIPTION	MATERIAL OF CONSTRUCTION	QTY.
1	Body	ASTM A 216 GR. WCB	2
2	Seat	PTFE / MPTFE / TFM	1
3	Disc	Duplex / Super Duplex / AL. Bronze / Cf8 / CF8M	1
4	Seat Pad	VITON / SILICON	2
5	Washer	PTFE	2
6	Gland Seals	VITON	4
7	T-Bush	SS 304	2
8	Disc Springs	50 Crv 4	6
9	Retainer	SS 304	2
10	Pin For Handle	STEEL	1
11	Handle	WCB	1
12	Teeth Plate	WCB / SS	1
13	Allen CSK Bolts	HT 12.9	3
14	Thrust Collar Top	SS 304	1
15	Sleeve	SS 304	1
16	Body Bolts	ASTM 193 GR. B7	2
17	Bush	PFA	2
18	Grub Screw	STEEL	1

INSTALLATION DETAILS OF LINED BUTTERFLY VALVE

WAFER & LUGGED CONSTRUCTION

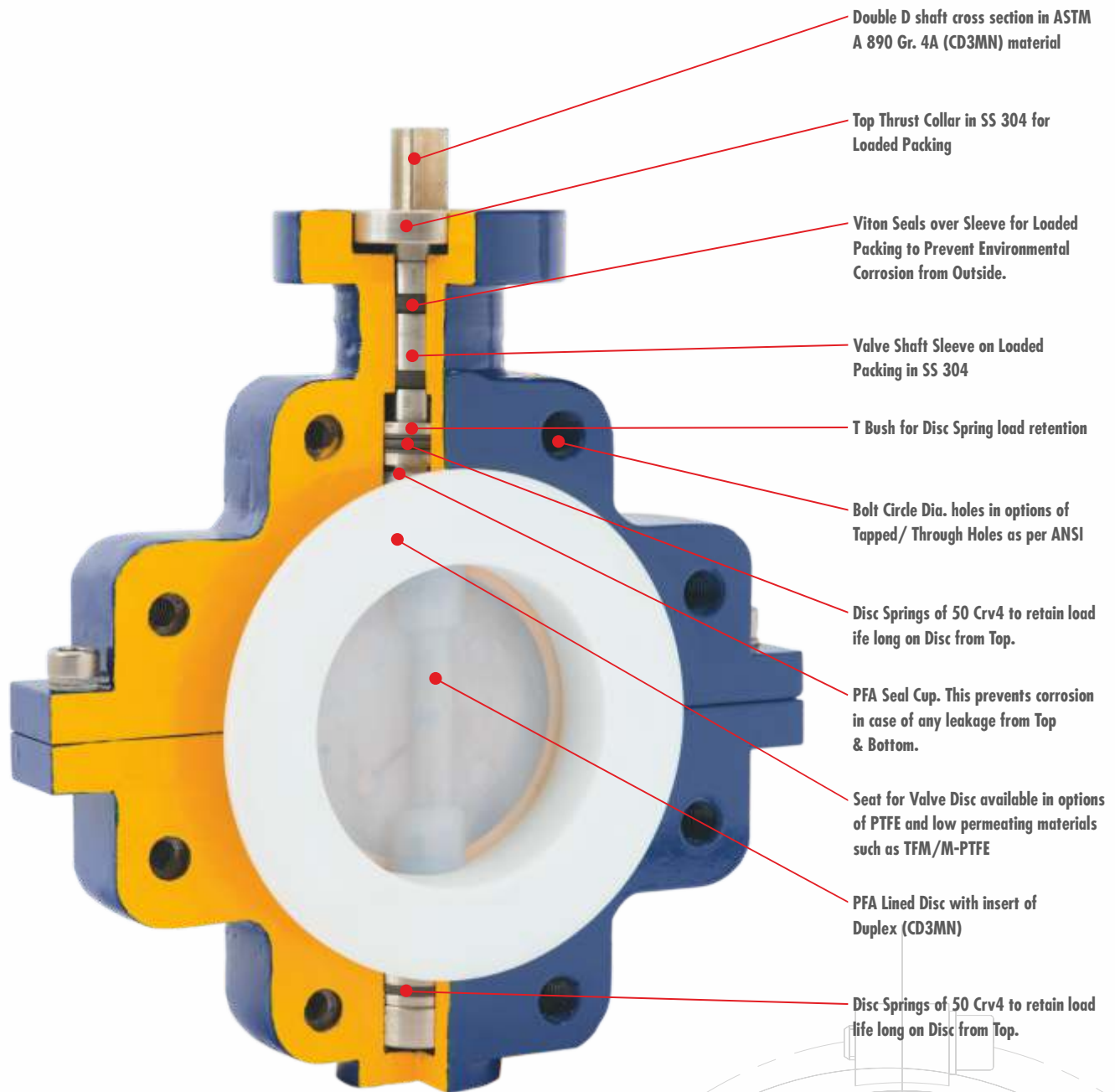


MINIMUM PIPE ID REQUIRED FOR FULL DISC OPENING

Size (MM)	F / F		D		a		Pipe I.D Req.(d)	
	INCH	MM	INCH	MM	INCH	MM	INCH	MM
600	6.29	160	27.6	700	22.6	575	23.0	585
500	5.23	133	23.0	584	18.7	477	19.3	490
450	4.72	120	21.0	534	16.9	430	17.3	440
400	4.25	108	18.5	470	15.1	384	15.4	390
350	3.3	84	16.2	412	13.3	338	13.5	344
300	3.3	84	15.0	380	11.3	286	11.5	292
250	2.83	72	12.7	323	9.3	236	9.5	242
200	2.52	64	10.6	270	7.4	187	7.6	193
150	2.36	60	8.5	216	5.4	136	5.5	140
125	2.36	60	7.3	185	4.2	107	4.4	110
100	2.2	56	6.2	157	3.2	80	3.3	83
80	1.97	50	5.0	127	2.1	52	2.2	55
65	1.97	50	4.1	105	1.42	36	1.54	39
50	1.85	47	3.6	92	VALVE DISC OPEN INSIDE "L"			

L = Face to face dimension of Butterfly Valve
 a = Chord of disc in open position
 ID (d) = Minimum Pipe ID Required
 50mm to 100mm size Lever Type, Above 100mm size Gear Type

VALVE FEATURES



Double D shaft cross section in ASTM A 890 Gr. 4A (CD3MN) material

Top Thrust Collar in SS 304 for Loaded Packing

Viton Seals over Sleeve for Loaded Packing to Prevent Environmental Corrosion from Outside.

Valve Shaft Sleeve on Loaded Packing in SS 304

T Bush for Disc Spring load retention

Bolt Circle Dia. holes in options of Tapped/ Through Holes as per ANSI

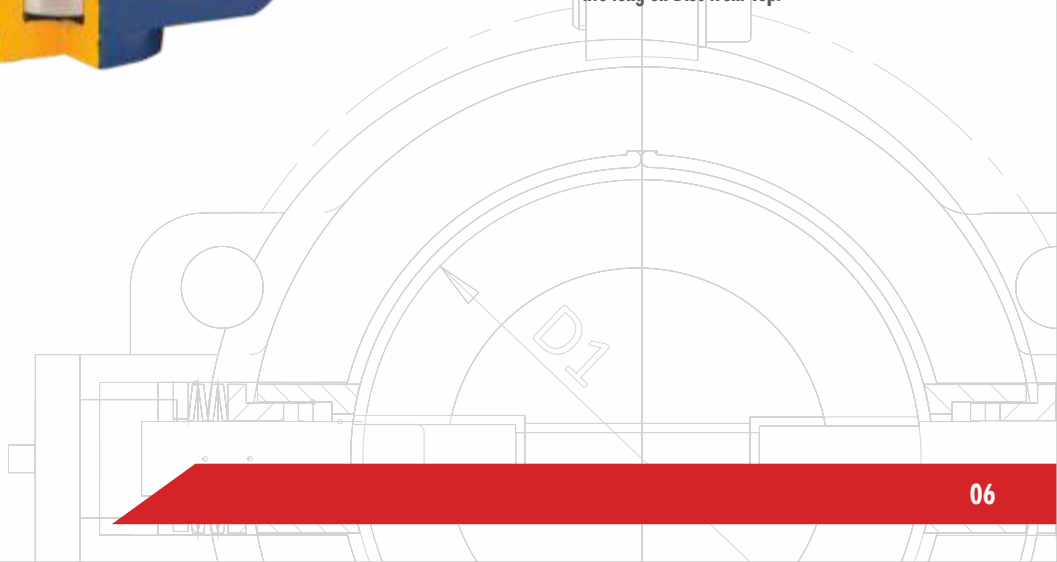
Disc Springs of 50 Crv4 to retain load life long on Disc from Top.

PFA Seal Cup. This prevents corrosion in case of any leakage from Top & Bottom.

Seat for Valve Disc available in options of PTFE and low permeating materials such as TFM/M-PTFE

PFA Lined Disc with insert of Duplex (CD3MN)

Disc Springs of 50 Crv4 to retain load life long on Disc from Top.



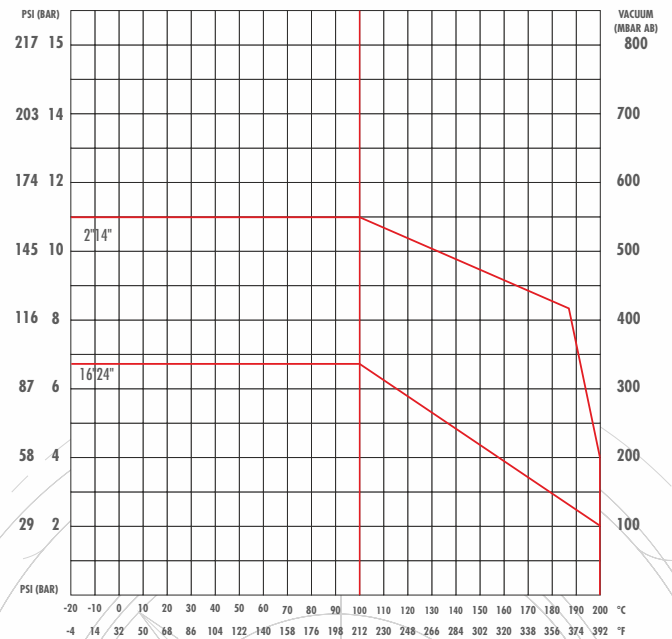
C_v VALUES FOR BUTTERFLY VALVE AT DIFFERENT POSITIONS

SIZE	20°	30°	40°	50°	60°	70°	80°	90°
2"	5.8	13	28	49	74	107	137	155
2.5"	9.3	22	47	81	125	180	232	263
3"	17	38	83	145	220	313	388	455
4"	23	56	110	188	296	447	563	678
5"	44	95	191	296	528	748	945	1177
6"	70	151	273	458	748	1108	1415	1734
8"	110	267	539	922	1369	2105	2796	3538
10"	203	406	824	1346	1867	2807	4234	5232
12"	307	605	1154	1995	3091	4599	6914	8363
14"	406	765	1369	2088	3341	5278	8329	10161
16"	591	1142	1717	2842	4907	7598	10730	13166
18"	771	1456	2587	4466	7250	10672	14210	17284
20"	1032	1879	3456	6206	9454	13688	18050	20880
24"	1125	2494	4849	8607	13166	19082	24592	28420

BREAK TORQUE VALUES FOR BUTTERFLY VALVES

SIZE	TORQUE IN Nm	TORQUE IN LB INCH
2"	30	265
2.5"	30	265
3"	30	265
4"	60	530
5"	110	972
6"	125	1105
8"	180	1591
10"	360	3183
12"	480	4243
14"	800	7072
16"	1200	10608
18"	2018	17840
20"	2460	21746
24"	3075	27183

PRESSURE - TEMPERATURE GRAPH FOR WCB+ PFA / PTFE LINED BUTTERFLY VALVES





WEIGHT / VALVE

SIZE	KGS.		LBS.	
	INCHES	WAFER	FULLLUG	WAFER
2"	5.00	6.50	11	14.30
2.5"	6.00	7.50	13	16.50
3"	7.00	8.60	15	19.00
4"	9.00	13.40	20	16.08
5"	20.00	23.00	44	50.60
6"	23.00	25.50	51	56.10
8"	26.00	30.50	57	67.10
10"	45.00	51.00	112	112.20
12"	62.00	75.00	136	165.00
14"	66.00	80.00	145	176.00
16"	112.00	135.00	246	297.00
18"	157.00	189.00	346	415.80
20"	288.00	346.00	634	761.20
24"	420.00	504.00	924	1109.00

CODE USED

TYPE OF VALVE	CODE
WAFER TYPE BUTTERFLY	BFWR
FULL LUG BUTTERFLY	BFFL

BODY CASTINGS	CODE
ASTM A 216 GR. WCB	C1
ASTM A 351 GR. CF8	C2
ASTM A 351 GR. CF8M	C3
ALLOY 20	C4
ASTM A 890 GR. 4A(CD3MN)	C5

TRIM INSERTS	CODE
ALLOY 20	T4
ASTM A 890 GR. 4A(CD3MN)	T5
SUPER DUPLEX	T6

OPERATION	CODE
LEVER	L
GEAR	G
BARE STEM	B

CODE USED

LINING MATERIAL	CODE
PFA	L1
FEP	L2
PVDF	L3
ETFE	L4
ANTISTATIC PFA	L7

SEAT WITH BACKING PADS	CODE
PTFE WITH SILICON	PS
PTFE WITH VITON	PV
TFM WITH SILICON	TS
TFM WITH VITON	TV

FASTNERS	CODE
SS 304	F2
SS 316	F3
HIGH TENSILE	F4
ASTM A 193 GR. B7	F5

LOCKING	CODE
PROVIDED	Y
NOT PROVIDED	N

SIZE													
2"	2.5"	3"	4"	5"	6"	8"	10"	12"	14"	16"	18"	20"	24"
CODE													
02	2H	03	04	05	06	08	10	12	14	16	18	20	24

HOW TO READ

CODE	BFFLC1T5L1PSF5GN08	
VALVE TYPE	BUTTERFLY FULL LUG	BFFL
CASTING	ASTM A 216 GR. WCB	C1
TRIM INSERT	ASTMA 890 GR. 4A(CD3MN)	T5
LINING MATERIAL	PFA	L1
SEAT/LINER	PTFE WITH SILICON BACKING PADS	PS
FASTNERS	ASTM A 193 GR. B7	F5
OPERATION	GEAR	G
LOCKING	NO	N
SIZE	8"	08



Distributor

A. LOUIS SUPPLY
5610 MAIN AVENUE
ASHTABULA, OH 44004
(440) 997-5161

BRANCH OFFICE

UNP Polyvalve USA
9704 North Holmes Street
Kansas City, MO 64155
Mobile: (816) 812-3600
brad@unp-valves.com

MUMBAI



THANE

207, Orion Business Park, Next to Cine Max, Kapurbawdi,
Ghodbunder Road, Thane (W) - 400 607. INDIA.
Phone : +91 22 2589 6422, 2589 6524 /25
Fax : + 91- 22- 2589-4221

VADODARA

CORPORATE OFFICE

946, GIDC, Makarpura,
Vadodara - 390 010. INDIA
Phone : +91-265-2649248, 2632628
Fax : +91-265-263737 9

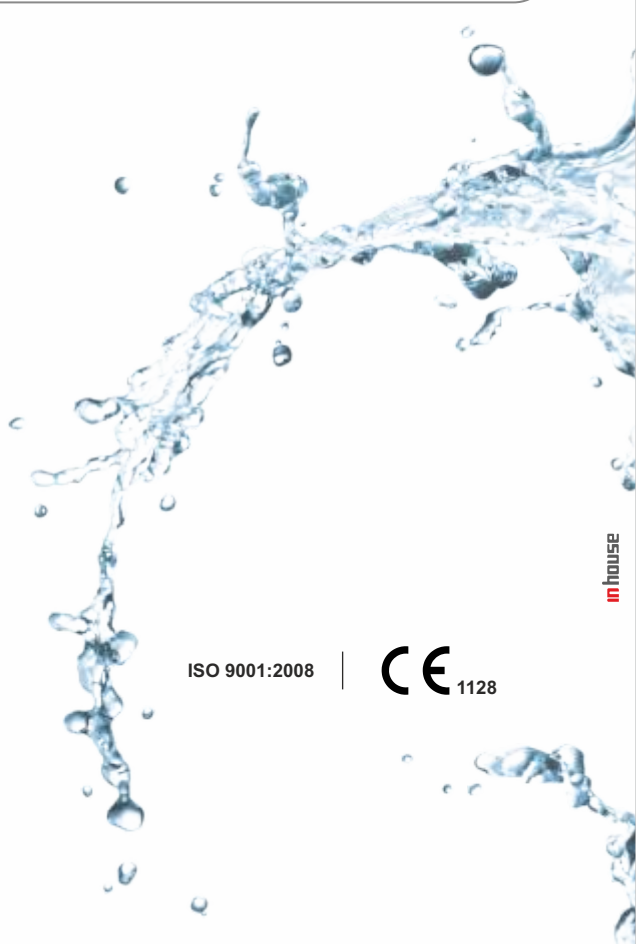
FACTORY

5 to 12 PR Industrial Estate,
Por GIDC - Kashipura Road,
Moje : Kashipura - 391 243,
Dist. Vadodara. INDIA
Phone : +91 70434 30467/77 , 70430 20707

www.ptfelinedvalvesindia.com

www.polyvalve.com

- UNP Polyvalves reserves the right, without notice to alter or improve the designs, specifications, dimensions of the products described herein.
- UNP Polyvalves does not assume any responsibility for the data given in this brochure. It is necessary for the customers to carry out necessary tests before selecting the MOC for their applications.



ISO 9001:2008

CE 1128