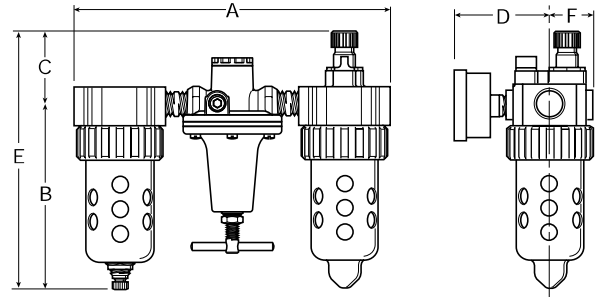
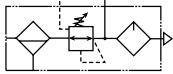


Standard Combinations – C628 Series

Three-Unit Combo

- See individual component pages for details.
- Gauges included on combinations.



Series	Port Size	Model Numbers
C628	1/4"	C628-02FRL2ACA2B*
	3/8"	C628-03FRL2ACA2B*
	1/2"	C628-04FRL2ACA2B*

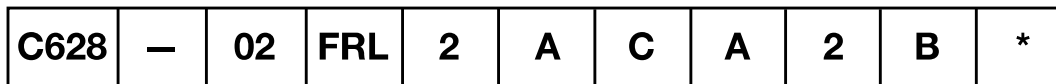
A	B	C	D	E	F
C628-02FRL, C628-03FRL					
9.64 (245)	5.69 (145)	2.24 (57)	3.18 (81)	7.93 (201)	1.37 (35)
C628-04FRL					
10.55 (268)	5.69 (145)	2.24 (57)	3.18 (81)	7.93 (201)	1.37 (35)

For other models, refer to ordering information.

Inches (mm)

• All dimensions nominal.

Ordering Information



Thread
 - NPT
 G* BSPP

* 1/4 & 3/8 inch meet ISO 1179-1 Standard.

Port Size
 02 1/4 Inch
 03 3/8 Inch
 04 1/2 Inch

Combo Type
 FRL Filter + Regulator + Lubricator
 (3 piece combination)

Filter Element
 A 40 Micron

Pressure Range
 C 0-125 psig
 D 0-250 psig

Relief
 A Relieving
 L Non-Relieving

Lubricator Bowl & Drain
Poly Bowl
 2 Metal Bowl Guard / No Drain
 6 Metal Bowl Guard / Pressure Fill
 N Metal Bowl Guard / Twist Drain
Metal Bowl
 4 Twist Drain
 8 Pressure Fill

Lubricator Body Options
 B With Fill Plug
 F With Body Pressure Fill

Engineering Level
 * Will be Entered at Factory

Filter Bowl & Drain
Poly Bowl
 2 Metal Bowl Guard / Twist Drain
 6 Metal Bowl Guard / Auto Float Drain
Metal Bowl
 3 Twist Drain
 4 Sight Gauge / Twist Drain
 7 Auto Float Drain
 8 Sight Gauge / Auto Float Drain

⚠ WARNING
 Product rupture can cause serious injury.
 Do not connect regulator to bottled gas.
 Do not exceed maximum primary pressure rating.

⚠ CAUTION:
REGULATOR PRESSURE ADJUSTMENT – The working range of knob adjustment is designed to permit outlet pressures within their full range. Pressure adjustment beyond this range is also possible because the knob is not a limiting device. This is a common characteristic of most industrial regulators, and limiting devices may be obtained only by special design. For best performance, regulated pressure should always be set by increasing the pressure up to the desired setting.

For polycarbonate bowl and sight dome, see Caution on Inside Cover.

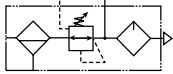
BOLD ITEMS ARE MOST POPULAR.



Standard Combinations – C628 Series

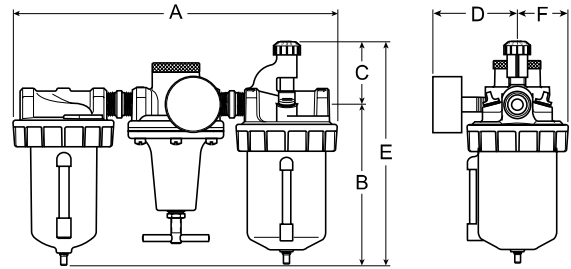
Three-Unit Combo

- See individual component pages for details.
- Gauges included on combinations.



Series	Port Size	Model Numbers
C628	3/4"	C628-06FRLWJCW
	1"	C628-08FRLWJCW
	1-1/4"	C628-10FRLWJCW
	1-1/2"	C628-12FRLWJCW

For other models, refer to ordering information below.

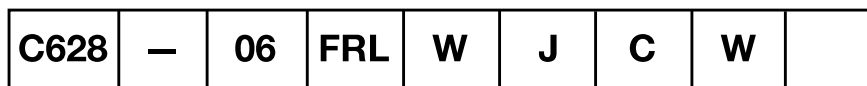


A	B	C	D	E	F
C628-06FRL, C628-08FRL					
15.75 (400)	7.75 (197)	2.63 (67)	3.52 (89)	13.00 (330)	2.48 (63)
C628-10FRL, C628-12FRL					
16.50 (419)	8.13 (206)	2.84 (72)	3.86 (98)	14.13 (359)	2.64 (67)

Inches (mm)

• All dimensions nominal.

Ordering Information



Thread – NPT	Port Size 06 3/4 Inch 08 1 Inch 10 1-1/4 Inch 12 1-1/2 Inch	Combo Type FRL Filter + Regulator + Lubricator (3 piece combination)	Filter Element J 40 Micron	Filter Bowl Options E 32 oz. Large Capacity wo/ Sight Gauge W 16 oz. Metal w/Sight Gauge	Pressure Range C 0-125 psig D 0-250 psig	Drains and Options H Button Head Fill Fitting (Lubricator) K Non-Relieving Regulator Q External Heavy Duty Auto Drain (Filter) R Internal Auto Drain (Filter) X9 Manual Twist Drain on Lubricator (Increases Product Length by 9/16 Inch)
------------------------	--	---	--------------------------------------	---	---	---

Lubricator Bowl Options E 32 oz. Large Capacity wo/ Sight Gauge W 16 oz. Metal w/Sight Gauge

CAUTION:
REGULATOR PRESSURE ADJUSTMENT – The working range of knob adjustment is designed to permit outlet pressures within their full range. Pressure adjustment beyond this range is also possible because the knob is not a limiting device. This is a common characteristic of most industrial regulators, and limiting devices may be obtained only by special design. For best performance, regulated pressure should always be set by increasing the pressure up to the desired setting.

WARNING
Product rupture can cause serious injury.
Do not connect regulator to bottled gas.
Do not exceed maximum primary pressure rating.

BOLD ITEMS ARE MOST POPULAR.

