

# Product data sheet

## Characteristics

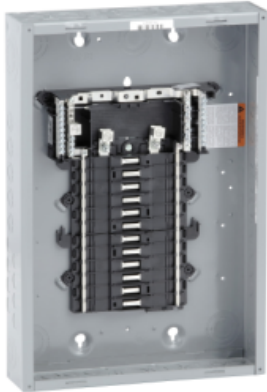
# QO124L125PG

QO LoadCenter, Main Lugs, 125A, 1PH-3W, 24SP, NEMA1, Incl. Gnd.Bar, PON

Product availability : Stock - Normally stocked in distribution facility



Price\*\* : 534.00 USD



### Main

Marketing Trade Name	QO
Product	Load Center
Cover type	Order separately

### Complementary

Tightening torque	Main lugs 50 lb.in, AWG 6...AWG 2/0, aluminium/copper Cover 20 lb.in
Load Center Type	Main lugs
Line Rated Current	125 A
Number of spaces	24
Short Circuit Current Rating	65 kA
Maximum Number of Single Pole Circuits	24
Maximum Number of Tandem Breakers	0
Number of Phases	1 phase
Voltage Rating	120/240 V AC
Wire Size	AWG 6...AWG 2/0 aluminium/copper
Electrical Connection	Lugs
Grounding Bar	Grounding bar included (not installed)
Electrical connection	Lugs
Wiring configuration	3-wire
Busbar Material	Tin plated copper busbar
Enclosure Material	Welded sheet steel
Cover Finish	Baked enamel Gray
Box number	7
Maximum Height	20.91 in (531 mm)

Maximum Width	14.25 in (362 mm)
---------------	-------------------

## Environment

Enclosure Rating	NEMA 1 indoor
Ambient air temperature for operation	23 °F (-5 °C) 104 °F (40 °C)
Product certifications	UL Listed

## Ordering and shipping details

Category	10003 - QO PON 1PH LC,12-60 CKT, ML N1
Discount Schedule	DE3A
GTIN	00785901133865
Package weight(Lbs)	12.2 lb(US) (5.53 kg)
Returnability	Yes
Country of origin	US

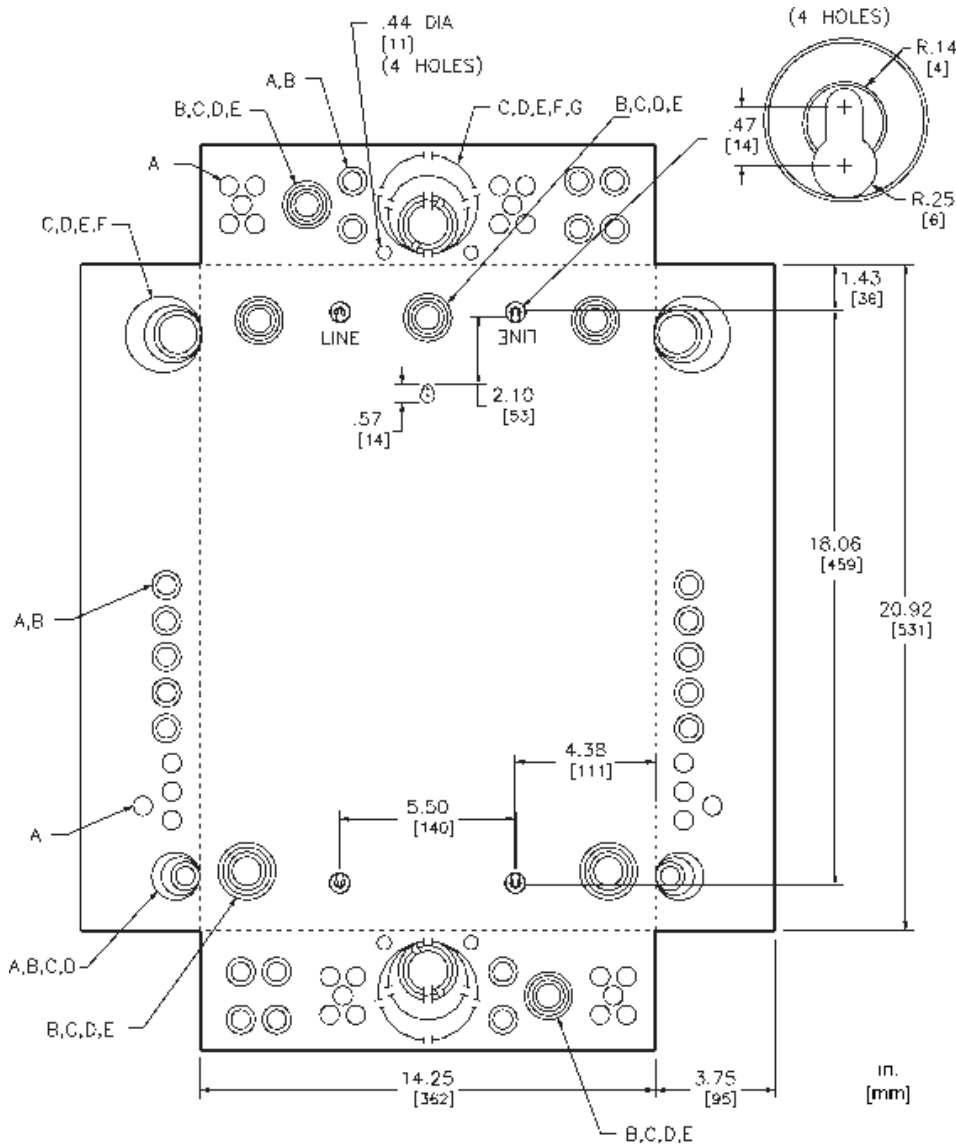
## Offer Sustainability

REACH Regulation	<a href="#">REACH Declaration</a>
REACH free of SVHC	Yes
EU RoHS Directive	Compliant <a href="#">EU RoHS Declaration</a>
Mercury free	Yes
RoHS exemption information	<a href="#">Yes</a>
China RoHS Regulation	<a href="#">China RoHS declaration</a> Product out of China RoHS scope. Substance declaration for your information.

## Contractual warranty

Warranty	18 months
----------	-----------

Approximate Dimensions



KNOCKOUTS							
SYMBOL	A	B	C	D	E	F	G
IN	.50	.75	1.00	1.25	1.50	2.00	2.50
MM	13	19	25	32	38	51	64

## Connections and Wiring Diagrams

