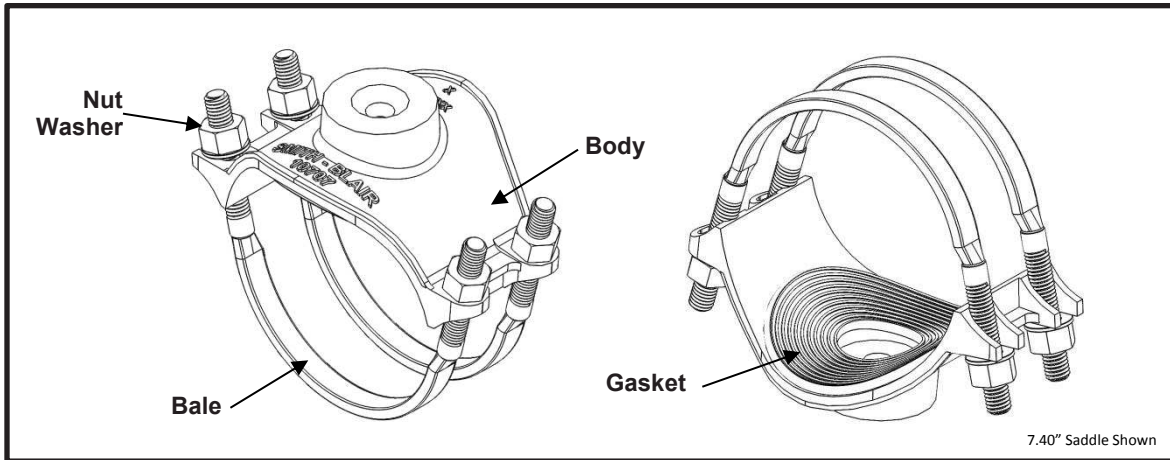


SPECIFICATION

REPAIR SERVICE SADDLE

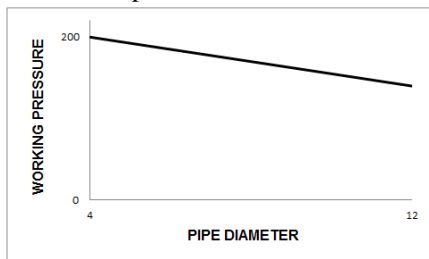
MODEL 331



APPLICATIONS

- **Typical Uses**
 - Repair and restore damaged branch connections
 - Tapping branch connections on new or existing pipe
 - Installing air/vacuum valves, pitot tubes, drain valves, or other miscellaneous service equipment
 - Installing pipe supports, hangers, or sign mounting brackets
- **Standard Pipe Sizes**
 - 4" to 12" nominal
- **Standard Taps**
 - NPT: 1/2", 3/4", 1", 1-1/4", 1-1/2" and 2"
 - CC/AWWA: 1/2", 5/8", 3/4", 1", 1-1/4", 1-1/2"
 - BSP: 1/2", 3/4", 1", 1-1/4", 1-1/2", 2"

See Smith-Blair catalog for available pipe diameter and tap size combinations as some combinations are not available
- **Type of Pipe**
 - Carbon Steel, Stainless Steel, Ductile Iron, Asbestos Cement, Aluminum
- **Working Pressure**
 - Up to 200 psi depending on type of pipe, type of repair, pipe diameter, service conditions, and installation workmanship





SPECIFICATION

REPAIR SERVICE SADDLE

MODEL 331

MATERIALS

- **Body**
 - Cast using Ductile Iron 65-45-12 per ASTM A536
 - Flexi-Coat® fusion bonded epoxy finish which meets application methods AWWA C213
 - Closed ear holds nut and bale in place allowing the assembly to hinge for ease of installation around pipe
 - Open ear provides easy slip on installation and removal of nuts are not required preventing lost hardware
 - Canted ears for maximum tangential tightening of bale
 - Wraparound design provides maximum pipe support , reinforcement, and sealing pressure
 - Wide skirt design provides excellent stability on the pipe
- **Bale**
 - HSLA Carbon Steel per AWWA C111/A21.11
 - Fe/Zn coated per ASTM F1941-10
 - 5/8"-11UNC
- **Gasket**
 - Nitrile (Buna-N) per ASTM D2000
 - Gasket Thickness: 0.25"
 - NSF/ANSI 61 and 372 certified
 - Compounded to resist water, oil, natural gas, acids, alkalies, most (aliphatic) hydrocarbon fluids, and many other chemicals
 - Temperature range: -20°F to +180°F
 - Standard 6.25" diameter gasket has concentric-ribbed pattern to better conform to pipe surface irregularities to ensure positive, dependable, seal of damaged areas up to 4.25" in diameter
- **Nuts**
 - Carbon Steel per ASTM A307
 - Fe/Zn coated per ASTM F1941-10
 - 5/8"-11UNC Heavy Hex Semi-Finished
- **Washer**
 - Carbon Steel per ASTM A108
 - Fe/Zn coated per ASTM F1941-10
 - 5/8" Type A Plain

LISTINGS

- Certified to NSF/ANSI 61-G & 372
- Meets applicable AWWA C800 standards

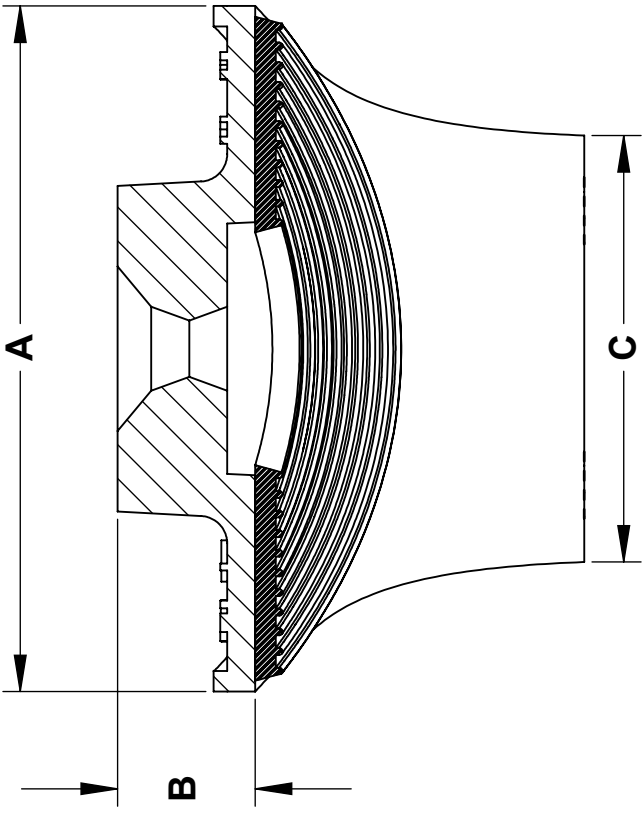
OPTIONS

- Type 304 Stainless Steel bale with fluoropolymer coated 304 Stainless Steel nuts to prevent galling
- Anode connector

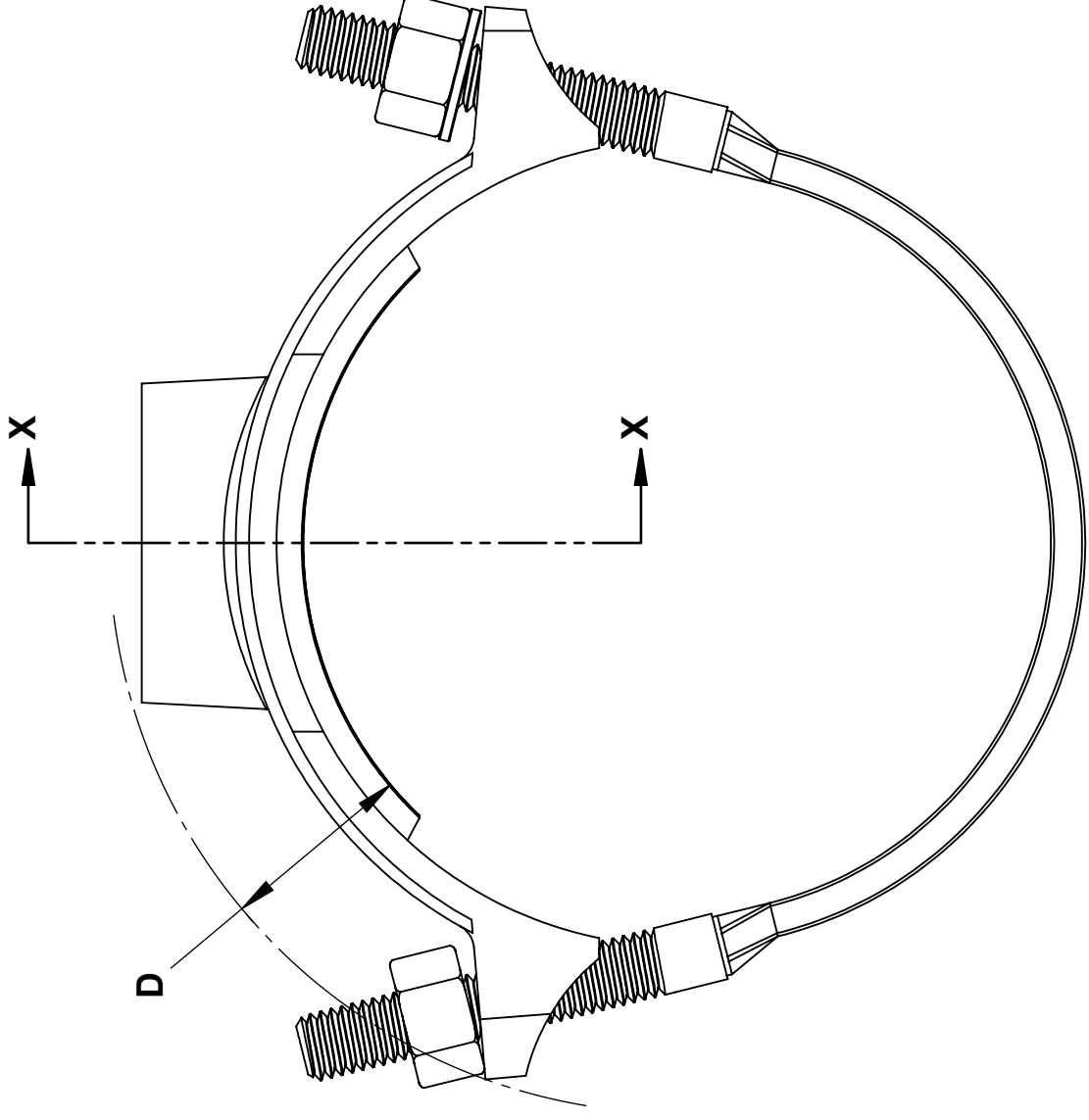
NOTES

- These product specifications were correct at the time of publication and are subject to change without notice
- Flexi-Coat® is a registered trademark of Smith-Blair Inc.
- See the Smith-Blair® web site for part numbers and ordering information
- See the Smith-Blair® web site for warranty information
- See the Smith-Blair® web site for corrosion warnings

30 Globe Ave, Texarkana, AR 71854
Ph: 870-773-5127 • Fax: 870-773-5212
Toll-Free Numbers: Ph: 800-643-9705 • Fax: 800-648-6792



SECTION X-X



- NOTES:**
1. SEE SMITH-BLAIR CATALOG FOR AVAILABLE PIPE DIAMETER AND TAP SIZE COMBINATIONS AS SOME COMBINATIONS ARE NOT AVAILABLE
 2. 7.40" SADDLE SHOWN OTHER SIZES SIMILAR

NOMINAL SIZE	APPROX. WT. (LB)	A	B	C	D	SOCKET SIZE
4.00	3					
6.00	4					
8.00	4	6.44	1.60	3.88	2.00	1-1/16"
10.00	6					
12.00	7					

TAP CHART				
SIZE	NPT	CC	BSP	
1/2"	03	04	59	
5/8"	-	05	-	
3/4"	06	07	50	
1"	08	09	51	
1-1/4"	10	11	54	
1-1/2"	12	13	52	
2"	14	-	53	

CERTIFIED TO NSF/ANSI 61-G & 372

TOLERANCES U.N.O. XX= ±.03 XXX= ±.015 FRACTIONS= ±.015 ANGLES= ±1° MACH. FIN=	NOTES: REMOVE BURRS AND SHARP EDGES DO NOT SCALE DWG.	APP'D	DATE
SCALE: N/A		CK'D	DATE
ALL DIMENSIONS ARE IN INCHES.		DRN	DATE
		CHD	DATE

TITLE		SPECIFICATION	
REPAIR SERVICE SADDLE		MODEL 331	
SMITH-BLAIR, Inc.		P/N	
TEXARKANA, ARKANSAS		N/A	
DWG. NO.		REV.	
SPEC_331.DRW		1 OF 1	
		3/8/16 SHEET	